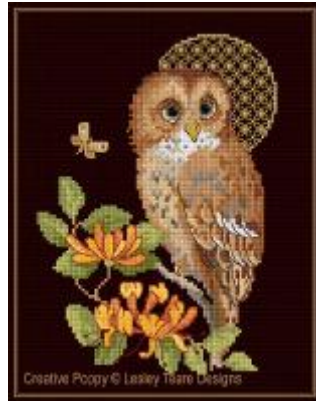




**Tawny Owl with decorative Moon
cross stitch pattern
by Lesley Teare Designs**



Manufacturer: Lesley Teare Designs
Reference:LJT688

Price: \$6.99

Options:

download pdf file : English

Description:

Tawny Owl with decorative Moon

CROSS STITCH PATTERN READY TO DOWNLOAD, DESIGNED BY **Lesley Teare Designs**

Head turned sideways, this owl is keeping watch, eyes wide open in the night. The full moon appears just behind. The owl's feet clutch the higher branches of a honeysuckle bush.

There are beautiful gold metallic highlights in this cross stitch pattern, with lace like motifs embellishing the large round moon.

A tutorial is included with the chart for all stitches.

A cross stitch pattern by **Lesley Teare Designs**.

>> see more [Bird patterns by Lesley Teare Designs](#)

Chart info & Needlework supplies for the pattern: **Tawny Owl with decorative Moon**

Chart size in stitches: 98 x 126 (wide x high)

Needlework fabric: 14ct Aida or 28ct Evenweave, Black

>> [View size in my choice of fabric \(fabric calculator\)](#)

Stitches: cross stitch, backstitch

Chart: color

Threads: DMC, Gold metallic of your choice

Number of colors: 23

Themes: night-time owl, moonlight, round full moon

>> see all [night time and moonlit patterns](#) (all designers)

>> see all [patterns with Owls](#) (all designers)

All patterns on Creative Poppy's website are **printable** and available for instant **download**.

[Link to the product](#)