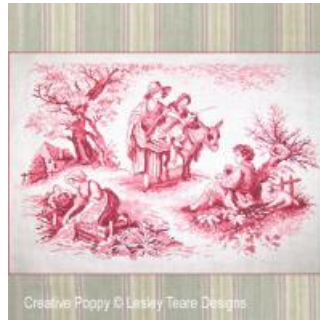


**Pink Toile de Jouy**  
cross stitch pattern  
by Lesley Teare Designs



**Manufacturer:** Lesley Teare Designs  
**Reference:** LJT640

**Price:** \$8.99

**Options:**

*download pdf file* : English

**Description:**

**Pink Toile de Jouy**

CROSS STITCH PATTERN READY TO DOWNLOAD, DESIGNED BY Lesley Teare Designs

A young woman is washing clothes on the riverside, with a thatched cottage in the distance. A young shepherd tends to his sheep, while travellers pass by under the shade of a large tree.

This Toile de Jouy by Lesley Teare, designed in cross stitch in the manner of the vintage 18th textiles, is an amazing feat. Toile de Jouy textiles became popular in late 18th and early 19th century. They came mostly in reds or blue and featured pastoral scenes and landscapes.

The delicate red tones are rendered in cross stitch in 8 hues ranging from scarlet to light pink. Backstitch is used for detail as well as a couple of fractional stitches, mostly defining the eyes. There is an alternate version available in blue (see below)

The chart comes with an extensive Cross stitch Guide detailing all stitches including fractional stitches.

A cross stitch pattern by Lesley Teare Designs.

>> see more patterns by Lesley Teare Designs

**Chart info & Needlework supplies for the pattern:**  
**Pink Toile de Jouy**

Chart size in stitches: 252 x 168 (wide x high)

Needlework fabric: Aida, Linen or Evenweave

>> [View size in my choice of fabric \(fabric calculator\)](#)

Stitches: Cross stitch, Backstitch, Three-quarter cross stitch

Chart: Color

Threads: DMC

Number of colors: 8

Themes: scarlet red, 18th and 19th century prints, antique fabric

>> see more [countryside scenes in cross stitch](#) (all designers)

All patterns on Creative Poppy's website are printable and available for instant download.

[Link to the product](#)