



Tea cup - SAL 2021 - Part 1

by
LESLEY TEARE
©



Tea Cup - 2021 SAL - Part 1

Fabric: 14ct Aida or 28 ct evenweave White

Sewing Count: 55/100mm or 14.0/inch

Chart Size (Whole design): 170 x 220 Stitches - Individual cup without frame 50 x 50 Stitches

Finished Size: 308 x 399 mm or 12.1 x 15.7 inch

Fabric Size: 458 x 549 mm or 18.0 x 21.6 inch

Thread: DMC stranded cotton. You might need 2 skeins for color 310.

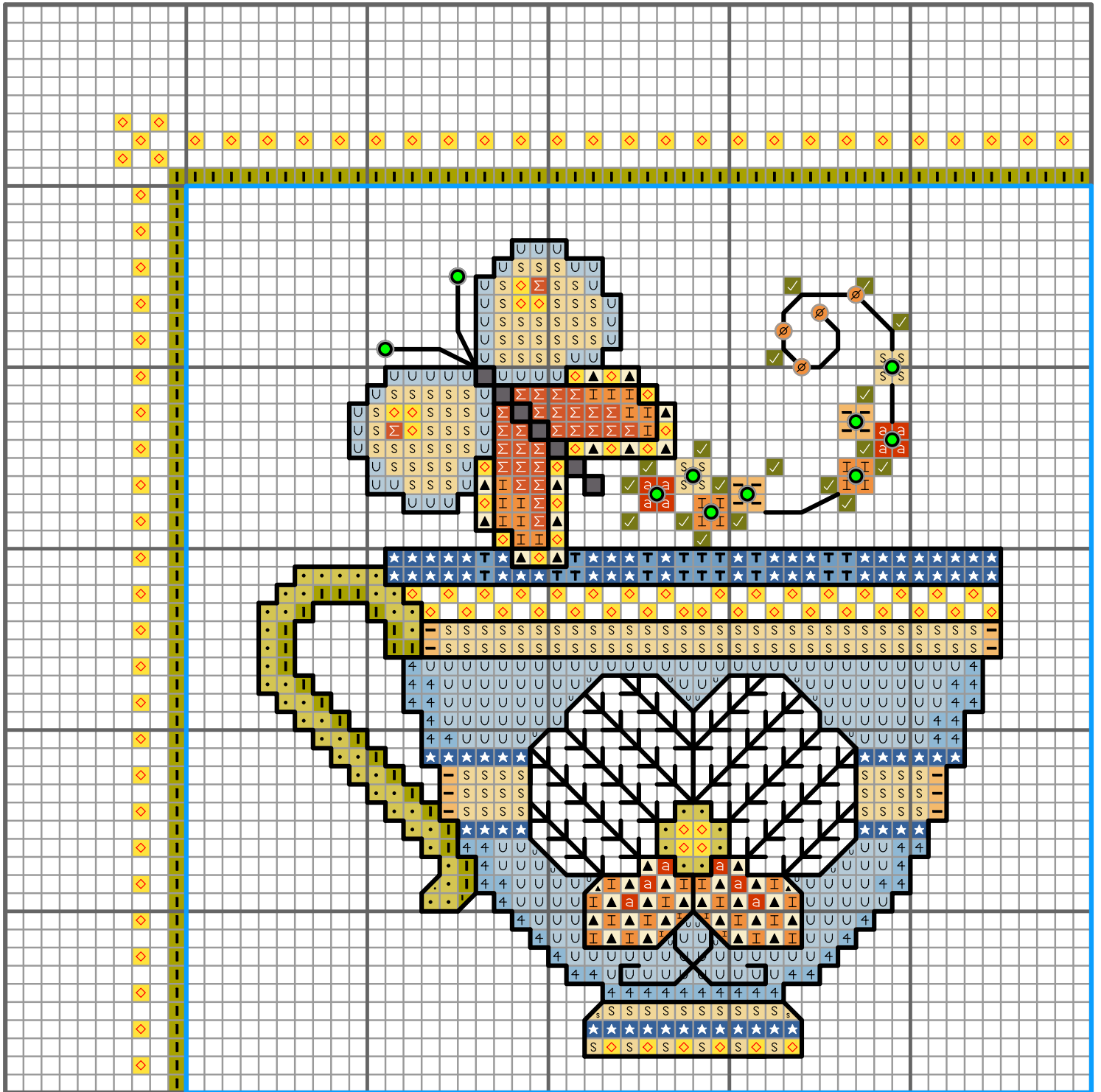
Stitch Style: Cross stitch in 2 strands, Backstitch in 1 strand, French knot in 1 strand wound twice round the needle.

Blue lines are for positioning only. Please do not stitch.

Color	Symbol	Backstitch	Cat. No.	Brand
	•		12	D.M.C.
	I		166	D.M.C.
	⦿		209	D.M.C.
	■		317	D.M.C.
	★		322	D.M.C.
	b		553	D.M.C.
	=		554	D.M.C.
	♥		580	D.M.C.
	✓		581	D.M.C.
	S		677	D.M.C.
	a		720	D.M.C.
	▲		746	D.M.C.
	U		775	D.M.C.
	Σ		922	D.M.C.
	4		3325	D.M.C.
	T		3755	D.M.C.
	◇		310	D.M.C.
	↑		3837	D.M.C.
	I		3854	D.M.C.
	-		3855	D.M.C.
	—	1 strand	310	D.M.C.
	●	French knots	310	D.M.C.
	∅	French knots	3854	D.M.C.
	—	GUIDE LINES ONLY		

Positioning:

	2	3
4	5	6
7	8	9
10	11	12





More patterns designed by Lesley Teare



Peacock Finery



Bird house Tweets



Poppy Girl



Oriental Flower Delight



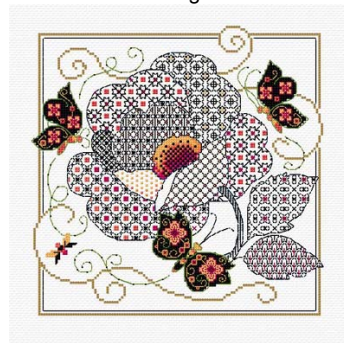
Vintage Bike



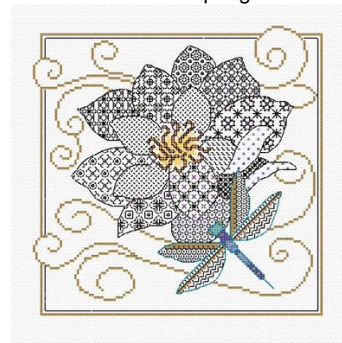
Birds in Spring



Poppy Blackwork



Flower and Butterfly Blackwork



Flower and Dragonfly Blackwork



Holly Girl



Blackwork Angel



Christmas Birds Cards

View these patterns and many more on Creative Poppy's website

www.creativepoppy.com

Tea Cup SAL 2021 - LJT991-012021 - Copyright Lesley Teare

Published by Creative Poppy www.creativepoppy.com Creative Co. 1 rue de Stockholm 75008 Paris, France



Copyright and Terms of use:

Thank you for purchasing this design from www.creativepoppy.com. We hope that you will have a lot of fun stitching this pattern.

By purchasing this chart, you have agreed to use this design for your **personal use only**. Any unauthorized copying, use or transfer of this design, **even without monetary gain**, is strictly prohibited under copyright law. This includes copying, scanning, reproducing, posting on a website, or sending by email any pattern for which one does not have the designer's specific authorization.

What you **cannot** do:

- make copies of this pattern to give or to sell
- send copies of this pattern by email
- upload or post this pattern onto a website
- make kits from this pattern

What you **are very welcome** to do:

- print out several copies for your PERSONAL use.
 - This can be helpful if you like to highlight stitched areas as you go along or if you want to highlight the occurrence of a specific color.
 - It can be useful too to print several copies of your charts to cut out elements and rearrange motifs, create words with alphabets, extend border motifs etc.
- save an extra copy of this file as a backup onto a USB key or external hard drive. In this case, make a note of you file-open password which will be needed next time you open your file.
- personally stitch several projects using this design.

Happy stitching!
Creative Poppy

Please support your designers and help respect their work. If you are aware of any copyright infringement, you can contact us at contact@creativepoppy.com

Creative Poppy is a Trademark of Creative Co. a company registered in France RCS 494 994 106
1 rue de Stockholm, 75008 Paris, France

www.creativepoppy.com