



Lesley Teare



Birds and Blackwork flowers - Part 1

by
LESLEY TEARE
©



Birds and Blackwork Flowers - Part 1

Fabric: 14 ct Aida or 28 ct linen evenweave, White

Sewing Count: 55/100mm or 14.0/inch

Chart Size: total chart 238 x 206 Stitches - each individual motif is 58 wide x 66 high including border

Finished Size: total design 432 x 374 mm or 17.0 x 14.7 inch

Fabric Size: total design 582 x 524 mm or 22.9 x 20.6 inch

Threads: DMC stranded cotton. DMC 310 Pearl cotton size 8 can be used for Backstitch in 1 strand instead of 2 strands of 310 DMC stranded cotton

Cross stitch in 2 strands; Backstitch in 1 strand except for parts worked in 2 strands as indicated in key.

French knots worked with two strands wound once round the needle.

Colour	Symbol	Backstitch	Cat. No.	Brand
	•		12	D.M.C.
	☆		155	D.M.C.
	⊗		209	D.M.C.
	◇		310	D.M.C.
	×		470	D.M.C.
	=		554	D.M.C.
	▽		677	D.M.C.
	⊙		720	D.M.C.
	▲		746	D.M.C.
	✓		907	D.M.C.
	♪		920	D.M.C.
	◆		959	D.M.C.
	U		995	D.M.C.
	↑		3607	D.M.C.
	b		3609	D.M.C.
	4		3812	D.M.C.
	T		3837	D.M.C.
	○		3854	D.M.C.
	-		3855	D.M.C.
	•			

please use 2 strands of 310 D.M.C stranded or 1 strand of 310 Perle (8)

155 D.M.C.

310 D.M.C.

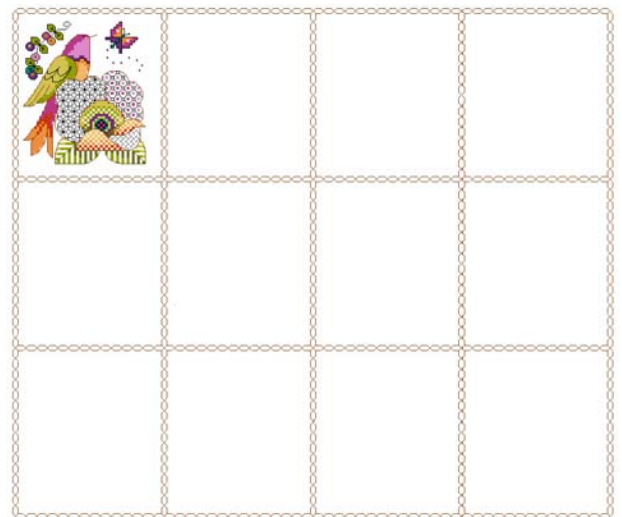
469 D.M.C.

720 D.M.C.

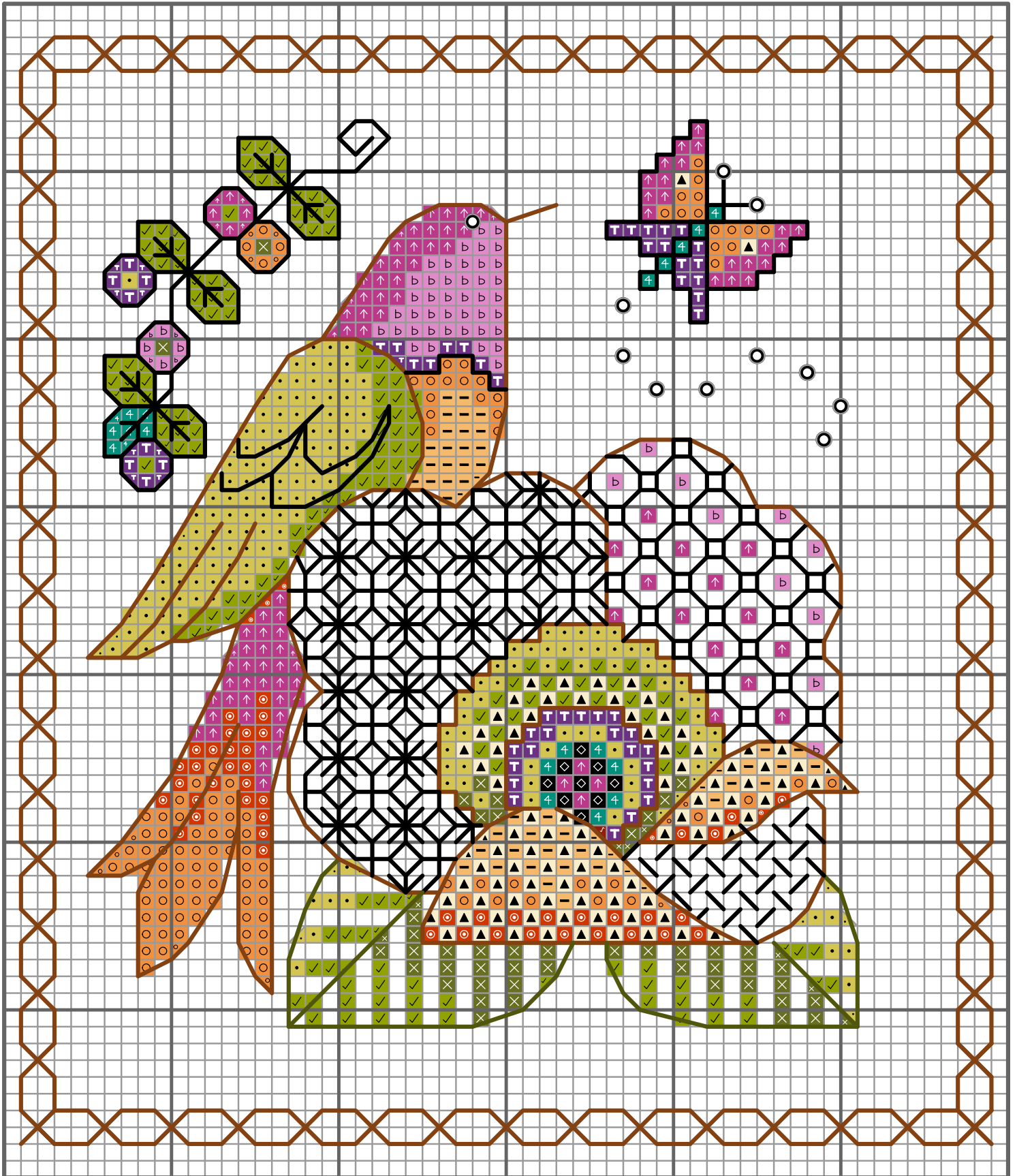
995 D.M.C.

French knots 310 D.M.C.

The Border motif comes as a separate chart.
Position this motif within the borders as shown below:



Note: this is the colour key is for the whole design (all parts), some colors might not be used in this part.





More Blackwork patterns designed by Lesley Teare



Blackwork Flowers with Birds



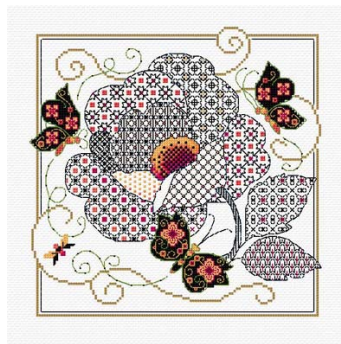
Blackwork Flower & Wren



Blackwork Butterfly cards



Poppy Blackwork



Flower and Butterfly Blackwork



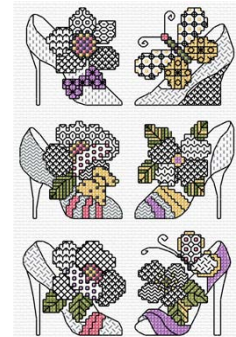
Flower and Dragonfly Blackwork



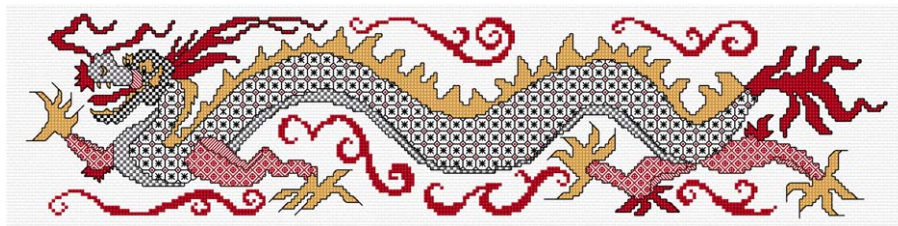
Blackwork Lady with Parasol



Blackwork Angel



Blackwork Shoes



Blackwork Dragon

View these patterns and many more on Creative Poppy's website
www.creativepoppy.com



Copyright and Terms of use:

Thank you for purchasing this design from www.creativepoppy.com. We hope that you will have a lot of fun stitching this pattern.

By purchasing this chart, you have agreed to use this design for your **personal use only**. Any unauthorized copying, use or transfer of this design, **even without monetary gain**, is strictly prohibited under copyright law. This includes copying, scanning, reproducing, posting on a website, or sending by email any pattern for which one does not have the designer's specific authorization.

What you **cannot** do:

- make copies of this pattern to give or to sell
- send copies of this pattern by email
- upload or post this pattern onto a website
- make kits from this pattern

What you **are very welcome** to do:

- print out several copies for your PERSONAL use.
 - This can be helpful if you like to highlight stitched areas as you go along or if you want to highlight the occurrence of a specific color.
 - It can be useful too to print several copies of your charts to cut out elements and rearrange motifs, create words with alphabets, extend border motifs etc.
- save an extra copy of this file as a backup onto a USB key or external hard drive. In this case, make a note of you file-open password which will be needed next time you open your file.
- personally stitch several projects using this design.

Happy stitching!
Creative Poppy

Please support your designers and help respect their work. If you are aware of any copyright infringement, you can contact us at contact@creativepoppy.com

Creative Poppy is a Trademark of Creative Co. a company registered in France RCS 494 994 106
1 rue de Stockholm, 75008 Paris, France

www.creativepoppy.com