



Barbara Ana
Designs



CLEO Mystery SAL

Barbara Ana Astray Mendez

PART 3

Fabric: 32 ct. Belfast Linen by Zweigart, Dark Chocolate (9024)

Design Area: 4.6 x 7.3 inch (11.6 cm x 18.6 cm) – 73 x 117 stitches

INSTRUCTIONS

Cross Stitches:

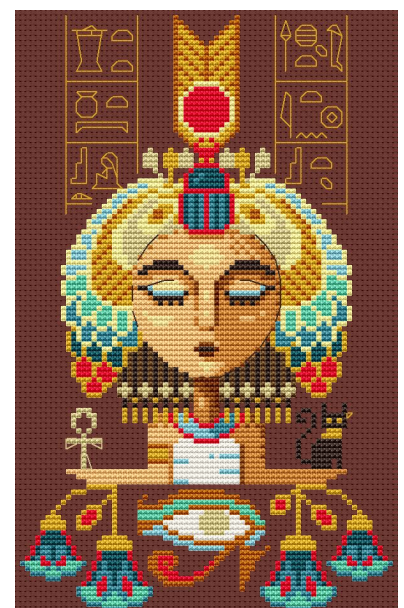
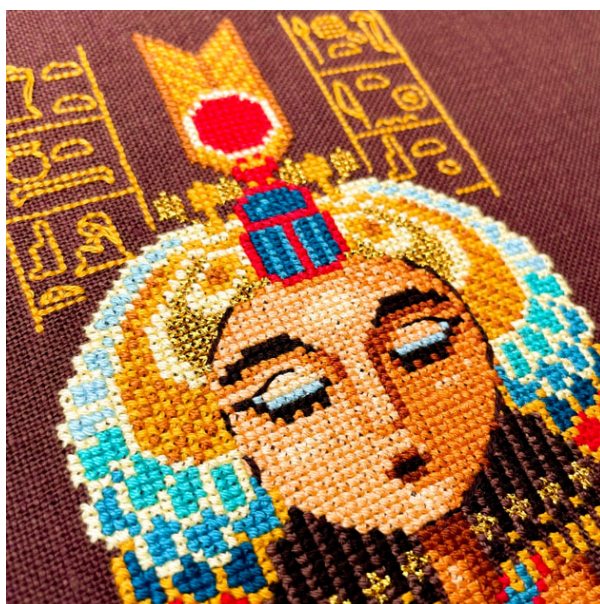
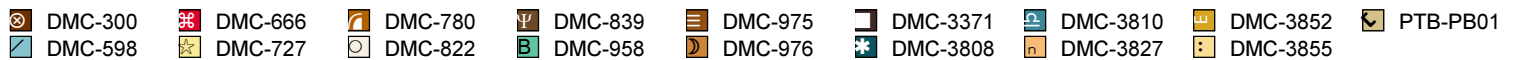
Two strands of floss over two fabric threads (use one strand of Petite Treasure Braid)

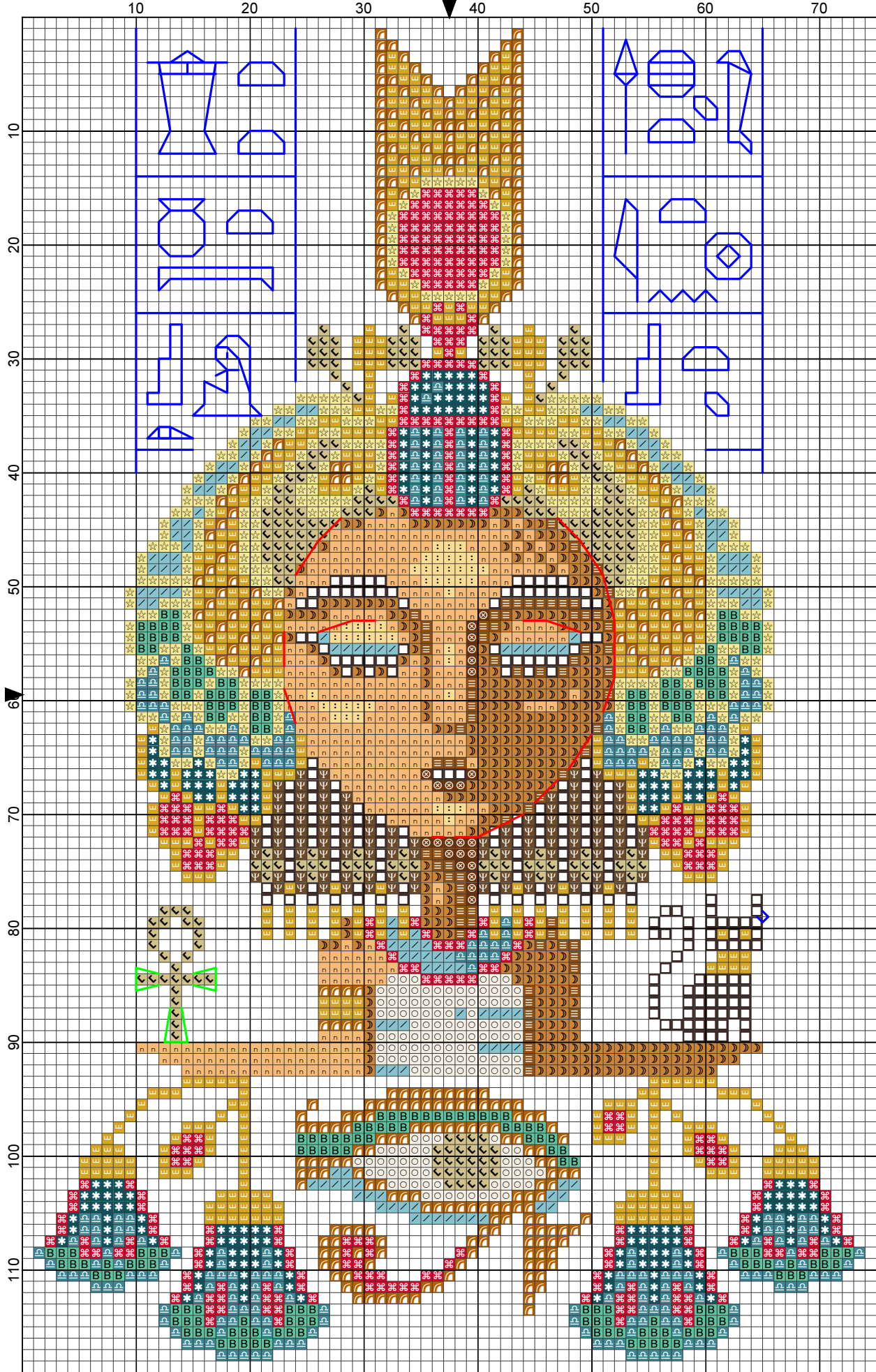
Backstitches:

Two strands of DMC 3371 (red lines) and 3852 (blue lines),
One strand of Petite Treasure Braid (green lines)

Threads:

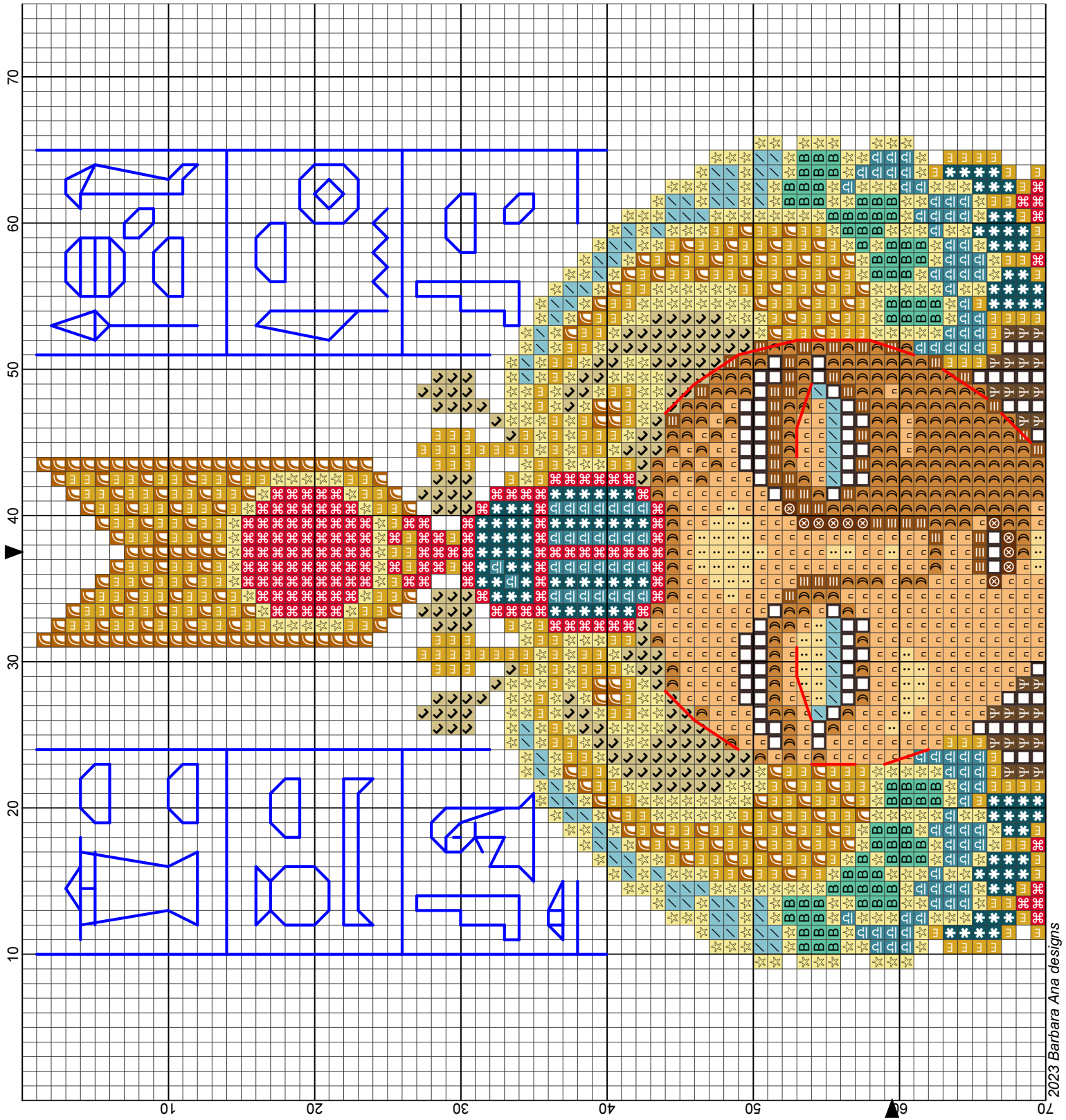
- DMC Stranded Cotton
- Rainbow Gallery Petite Treasure Braid (PB01 Bright gold)

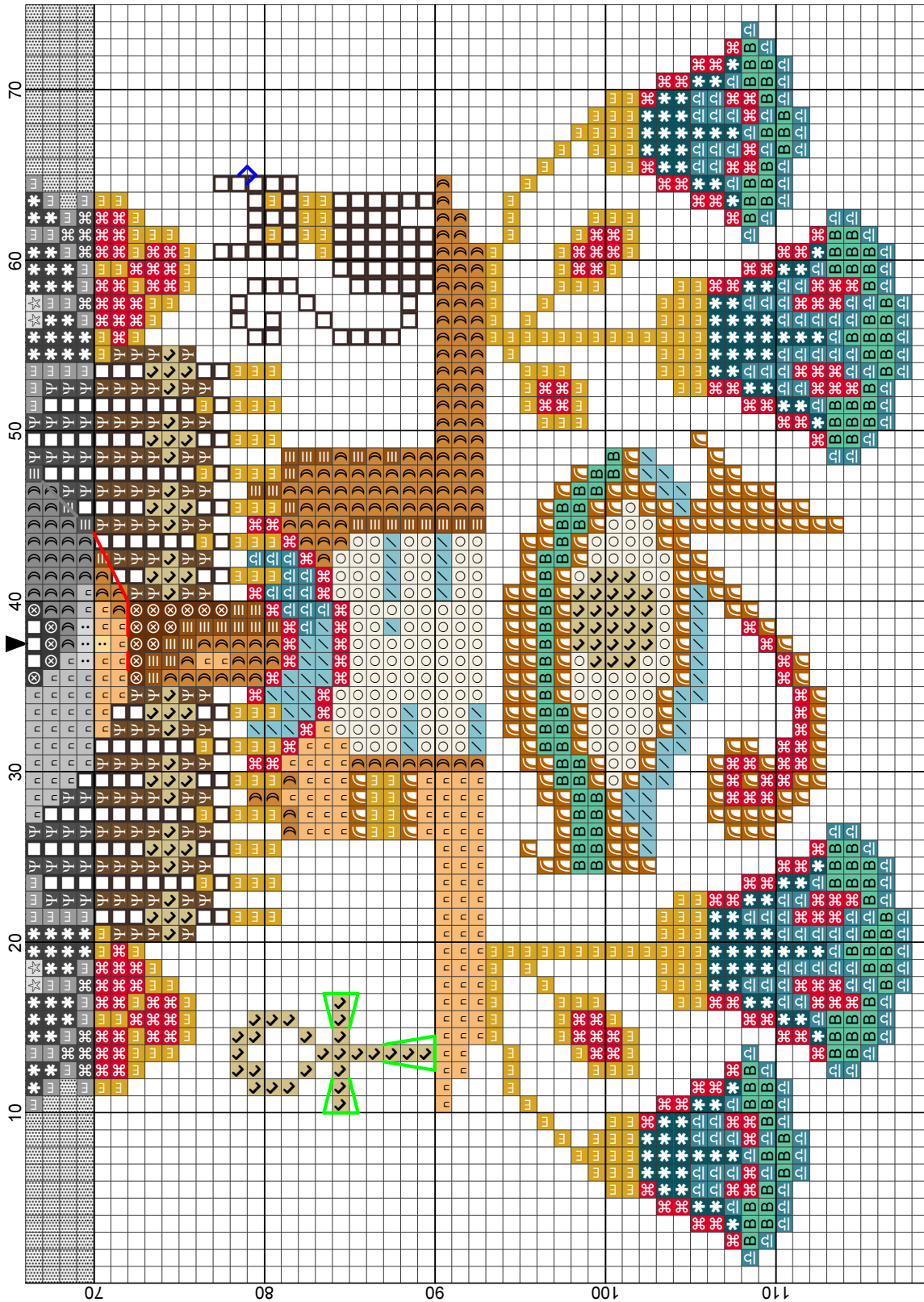




2023 Barbara Ana designs

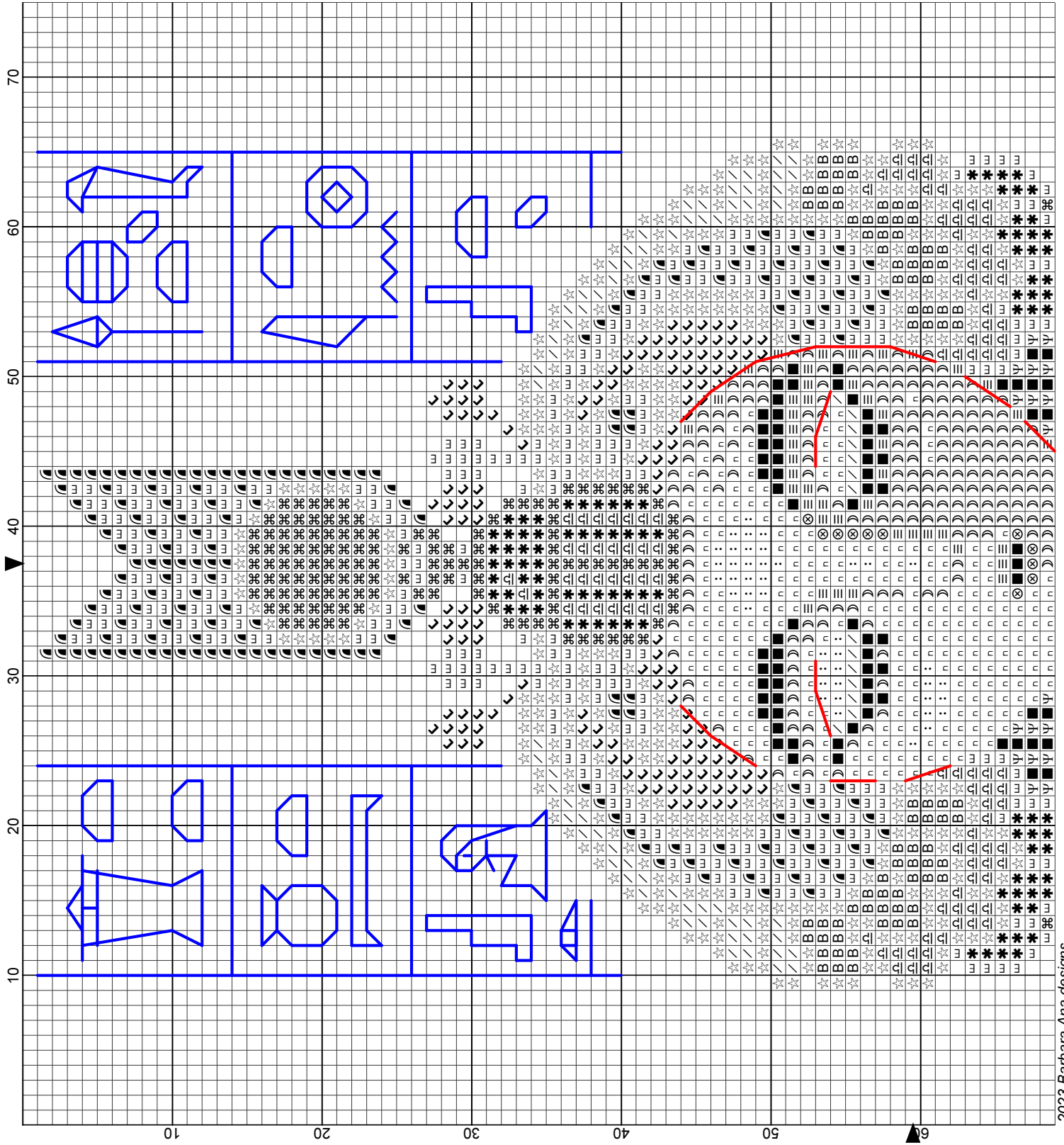
- Legend:
- | | | | | | | | | |
|--|--|--|--|--|--|--|--|--|
| | | | | | | | | |
| | | | | | | | | |
- Backstitches:
- DMC-3371
 - DMC-3852
 - PTB-PB01

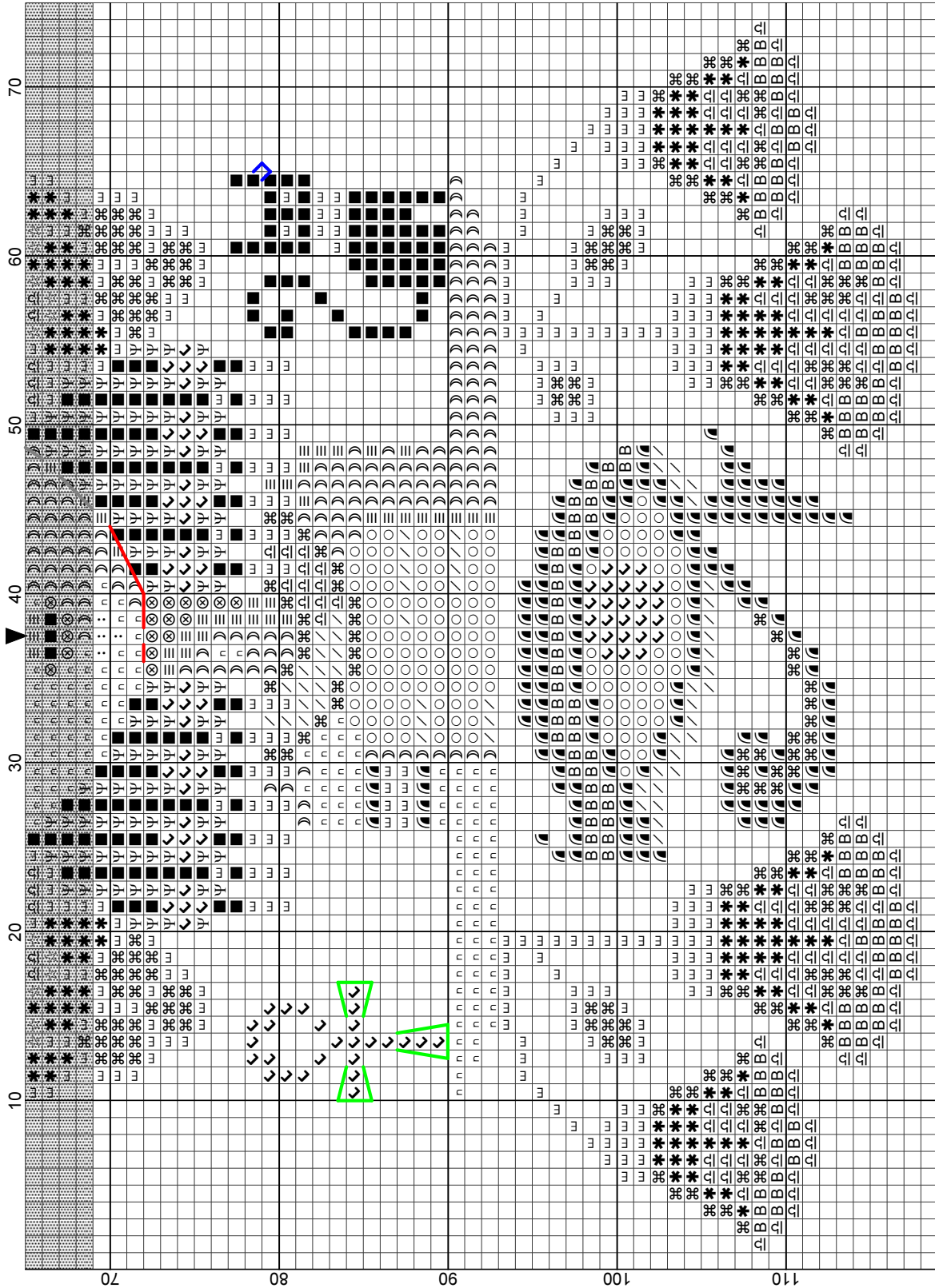




2023 Barbara Ana designs

- Legend:**
- DMC-300
 - DMC-598
 - DMC-666
 - DMC-727
 - DMC-780
 - DMC-822
 - DMC-839
 - DMC-958
 - DMC-975
 - DMC-976
 - DMC-3371
 - DMC-3852
 - DMC-3859
 - DMC-3810
 - DMC-3827
 - DMC-3852
 - DMC-3855
 - PTB-PB01
- Backstitches:**
- DMC-3371
 - DMC-3852
 - PTB-PB01





2023 Barbara Ana designs

- Legend:
- ⊗ DMC-300
 - ⊙ DMC-598
 - ⊠ DMC-666
 - ⊡ DMC-727
 - ⊢ DMC-780
 - ⊣ DMC-822
 - ⊤ DMC-839
 - ⊥ DMC-958
 - ⊦ DMC-975
 - ⊧ DMC-976
 - ⊨ DMC-3371
 - ⊩ DMC-3808
 - ⊪ DMC-3810
 - ⊫ DMC-3827
 - ⊬ DMC-3852
 - ⊭ DMC-3855
 - ⊮ PTB-PB01
- Backstitches:
- DMC-3371
 - DMC-3852
 - PTB-PB01