



CLEO Mystery SAL

Barbara Ana Astray Mendez

PART 2

Fabric: 32 ct. Belfast Linen by Zweigart, Dark Chocolate (9024)

Design Area: 4.6 x 7.3 inch (11.6 cm x 18.6 cm) – 73 x 117 stitches

INSTRUCTIONS

Cross Stitches:

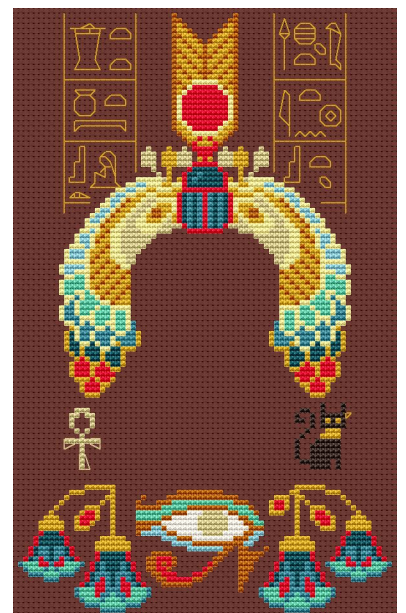
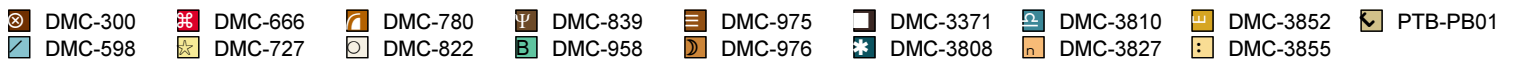
Two strands of floss over two fabric threads (use one strand of Petite Treasure Braid)

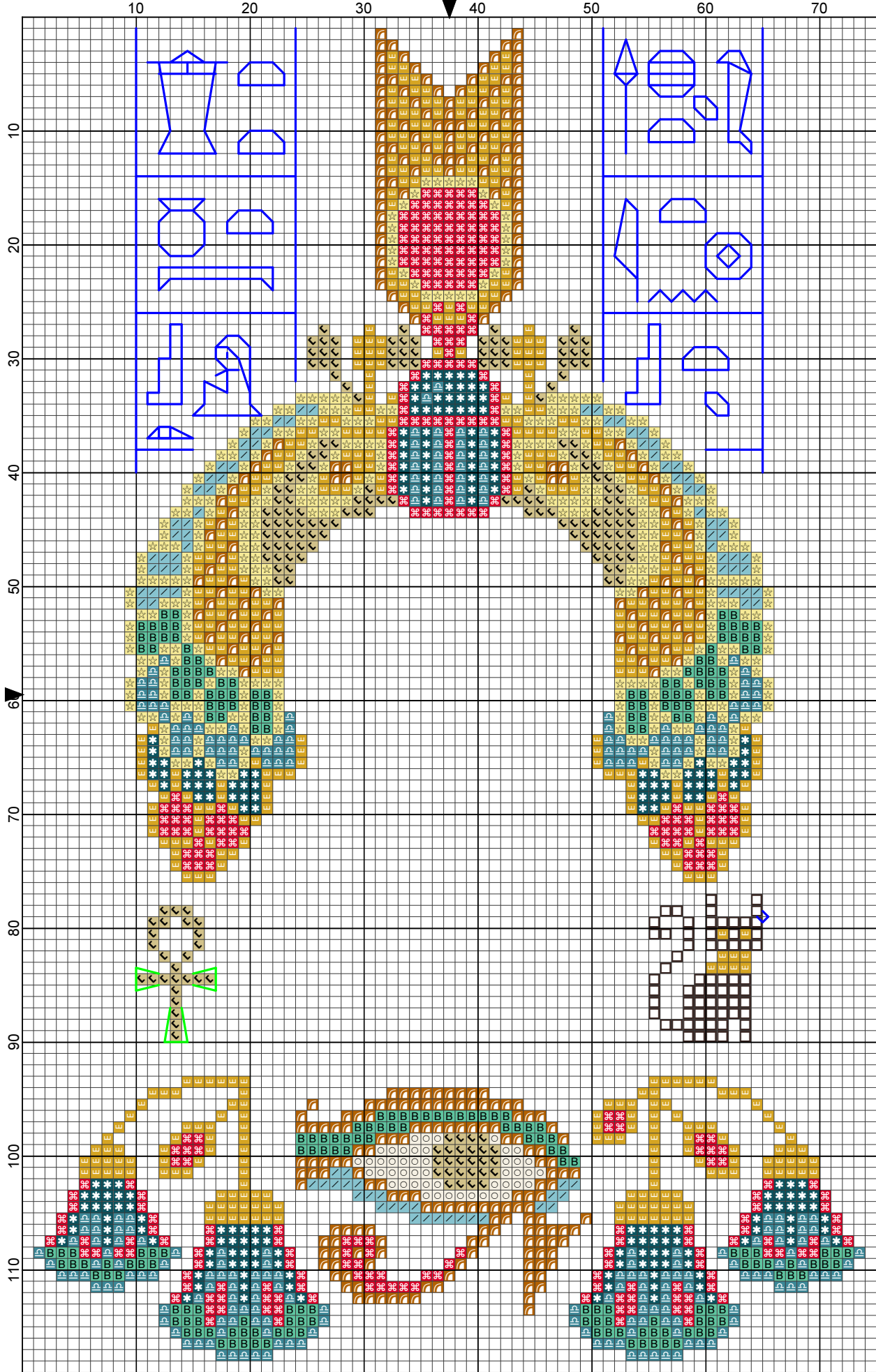
Backstitches:

Two strands of DMC 3371 (red lines) and 3852 (blue lines),
One strand of Petite Treasure Braid (green lines)

Threads:

- DMC Stranded Cotton
- Rainbow Gallery Petite Treasure Braid (PB01 Bright gold)

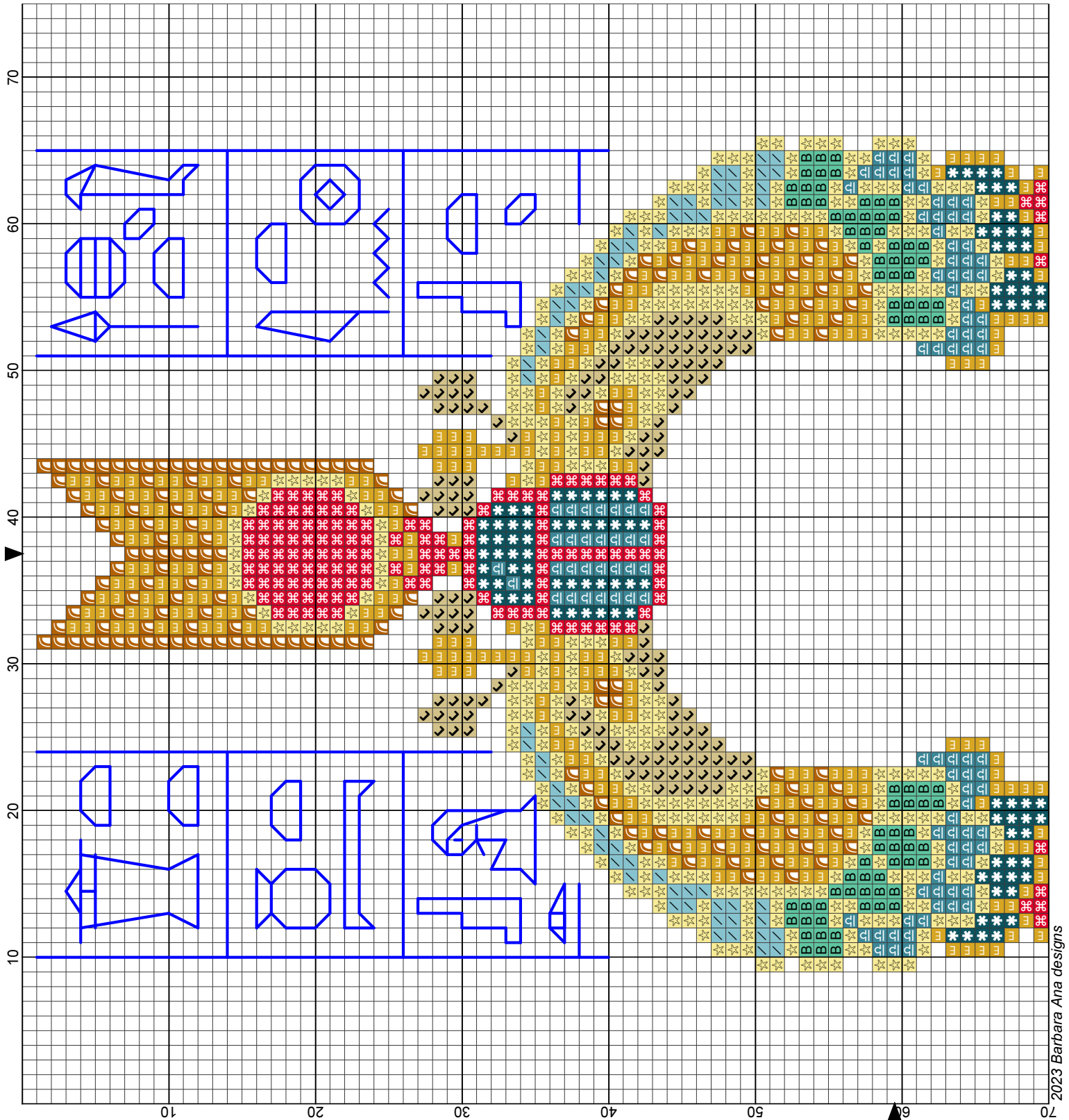


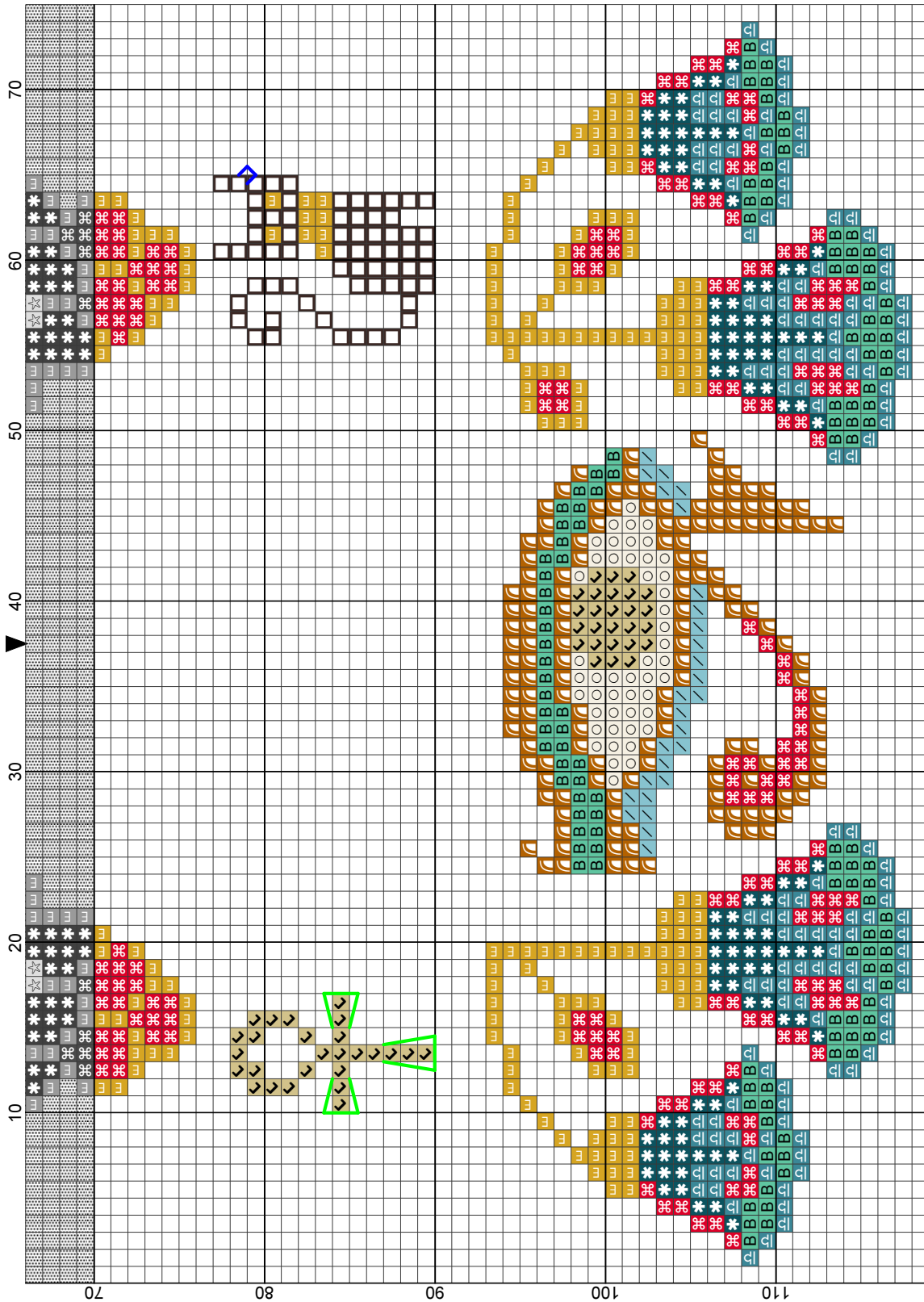


2023 Barbara Ana designs

- Legend:
- | | | | | | |
|---------|---------|---------|----------|----------|----------|
| | | | | | |
| DMC-598 | DMC-727 | DMC-822 | DMC-3371 | DMC-3810 | PTB-PB01 |
| | | | | | |
| DMC-666 | DMC-780 | DMC-958 | DMC-3808 | DMC-3852 | |

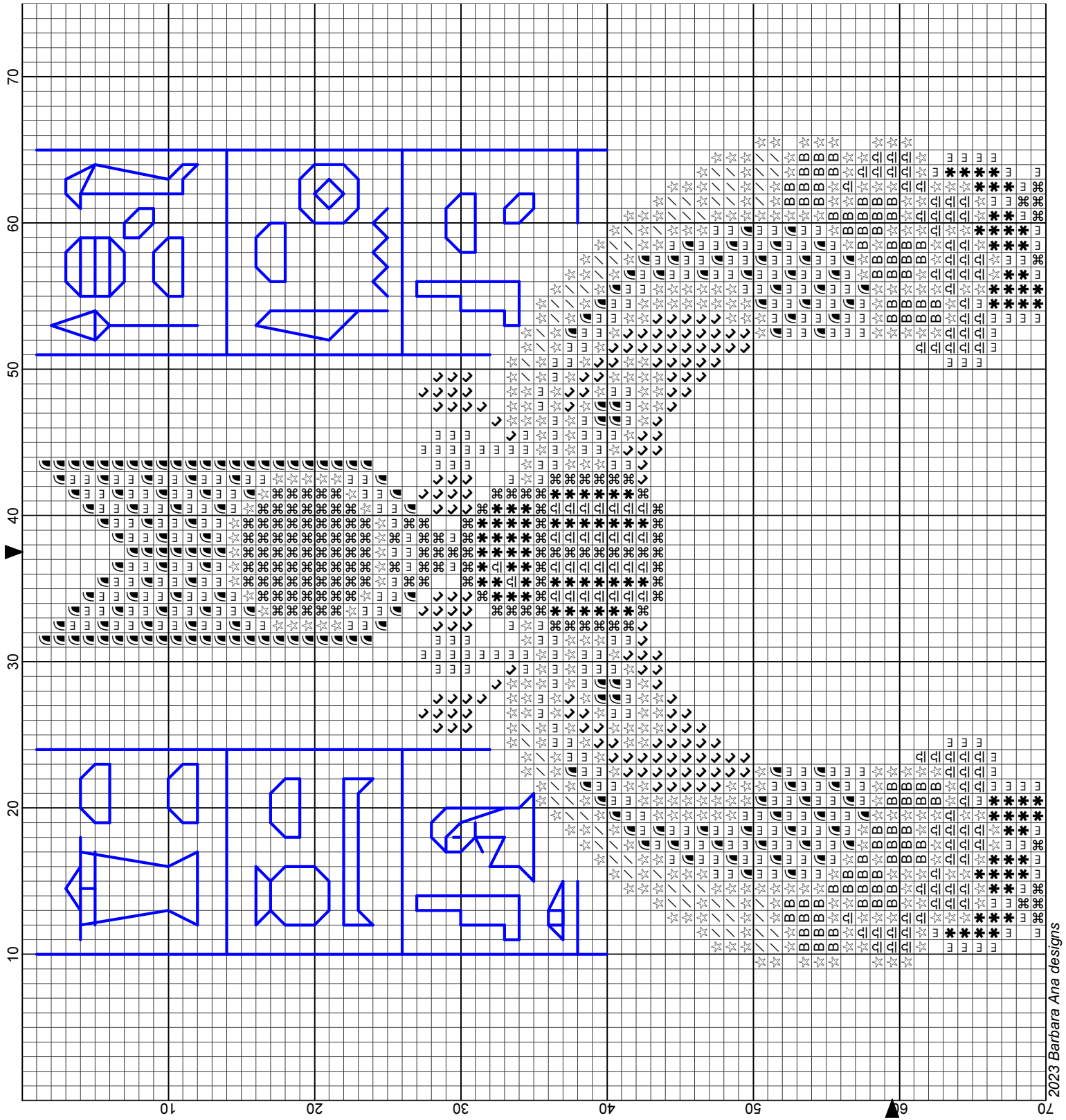
Backstitches:
 DMC-3852 PTB-PB01

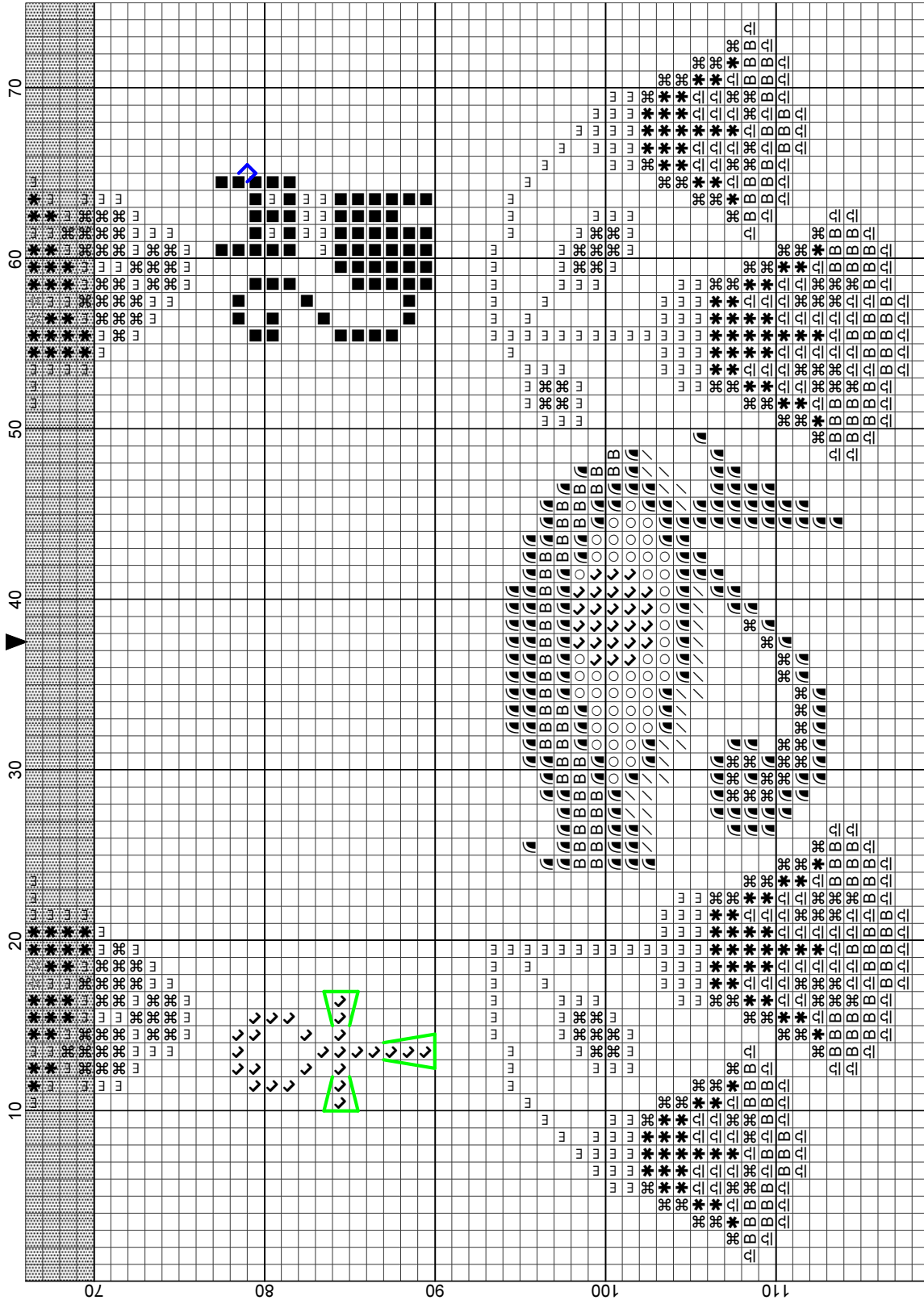




2023 Barbara Ana designs

- Legend:
-  DMC-598
 -  DMC-666
 -  DMC-666
 -  DMC-727
 -  DMC-780
 -  DMC-822
 -  DMC-958
 -  DMC-3371
 -  DMC-3808
 -  DMC-3810
 -  DMC-3852
 -  PTB-PB01
- Backstitches:
-  DMC-3852
 -  PTB-PB01





2023 Barbara Ana designs

- Legend:
- ◻ DMC-598
 - ◻ DMC-666
 - ◻ DMC-727
 - ◻ DMC-780
 - ◻ DMC-822
 - ◻ DMC-852
 - ◻ DMC-958
 - ◻ DMC-3371
 - ◻ DMC-3808
 - ◻ DMC-3810
 - ◻ DMC-3852
 - ◻ PTB-PB01
- Backstitches:
- DMC-3852
 - PTB-PB01