



# CLEO Mystery SAL

Barbara Ana Astray Mendez

## PART 1

**Fabric:** 32 ct. Belfast Linen by Zweigart, Dark Chocolate (9024)

**Design Area:** 4.6 x 7.3 inch (11.6 cm x 18.6 cm) – 73 x 117 stitches

### INSTRUCTIONS

#### Cross Stitches:

Two strands of floss over two fabric threads (use one strand of Petite Treasure Braid)

#### Backstitches:

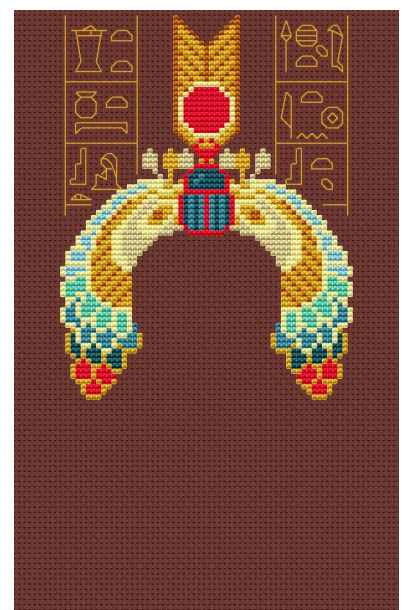
Two strands of DMC 3371 (red lines) and 3852 (blue lines),  
One strand of Petite Treasure Braid (green lines)

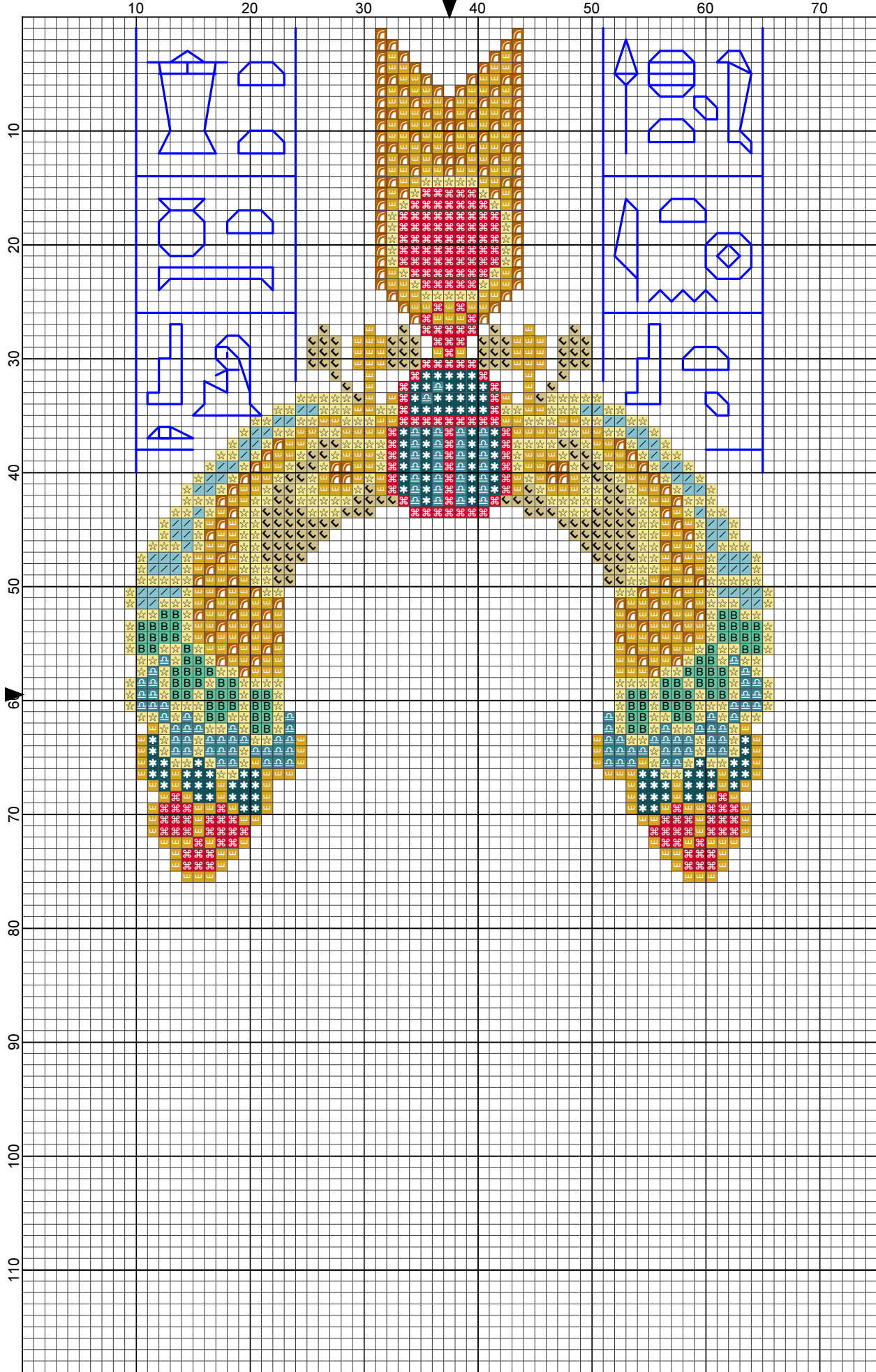
#### Threads:

- DMC Stranded Cotton
- Rainbow Gallery Petite Treasure Braid (PB01 Bright gold)

DMC-300	DMC-666	DMC-780	DMC-839	DMC-975	DMC-3371	DMC-3810	DMC-3852	PTB-PB01
DMC-598	DMC-727	DMC-822	DMC-958	DMC-976	DMC-3808	DMC-3827	DMC-3855	

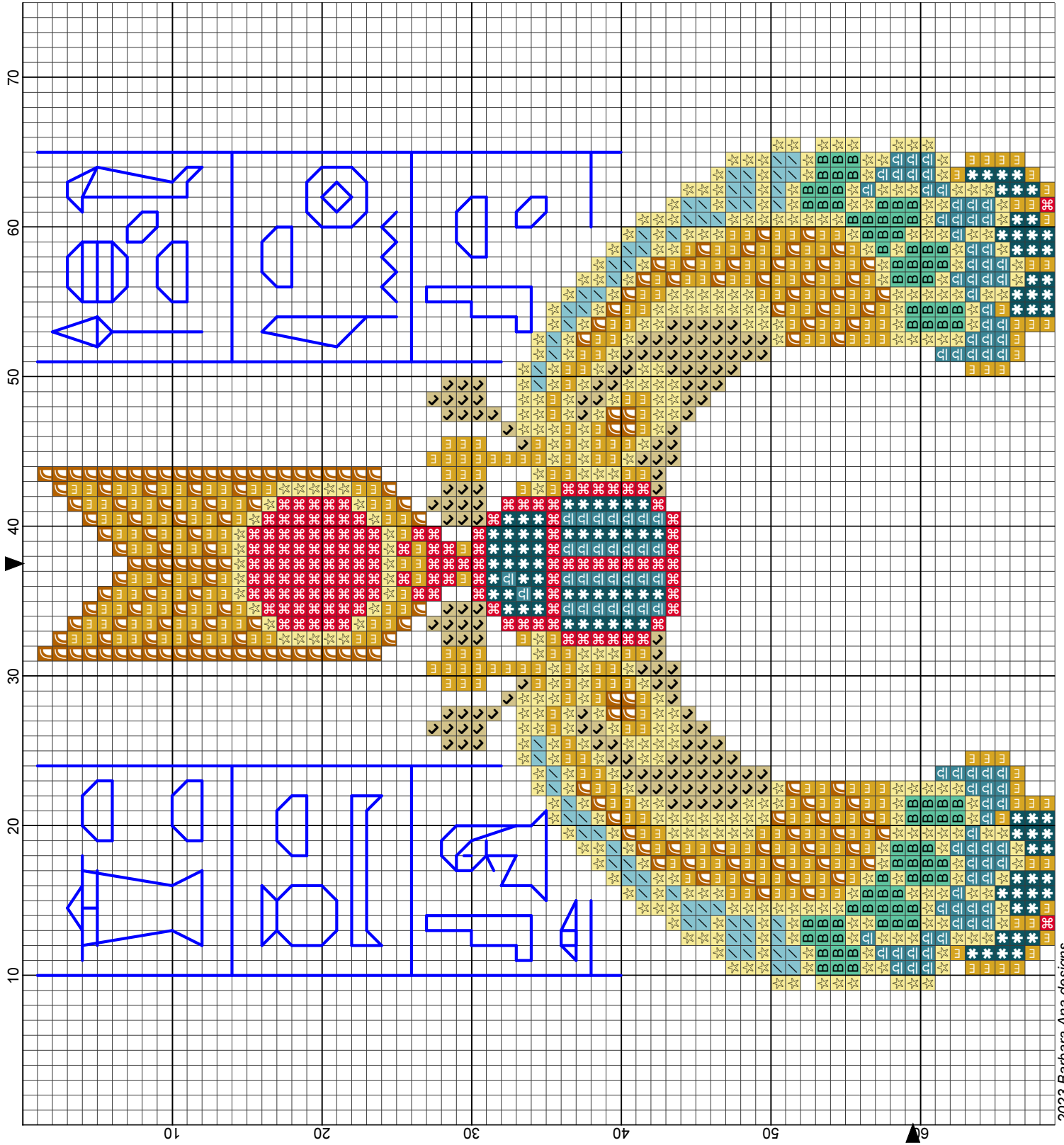
— DMC-3371    — DMC-3852    — PTB-PB01

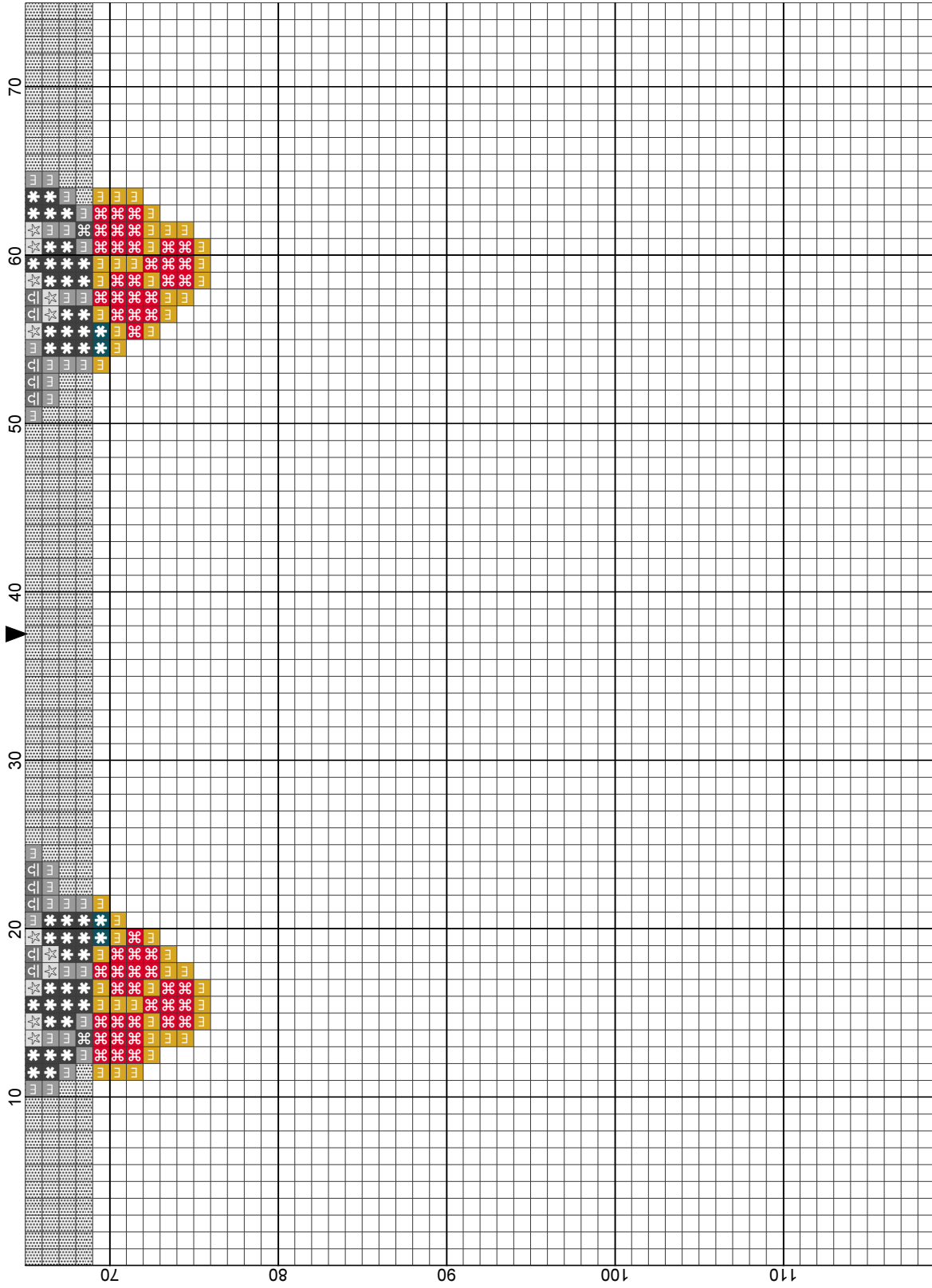




2023 Barbara Ana designs

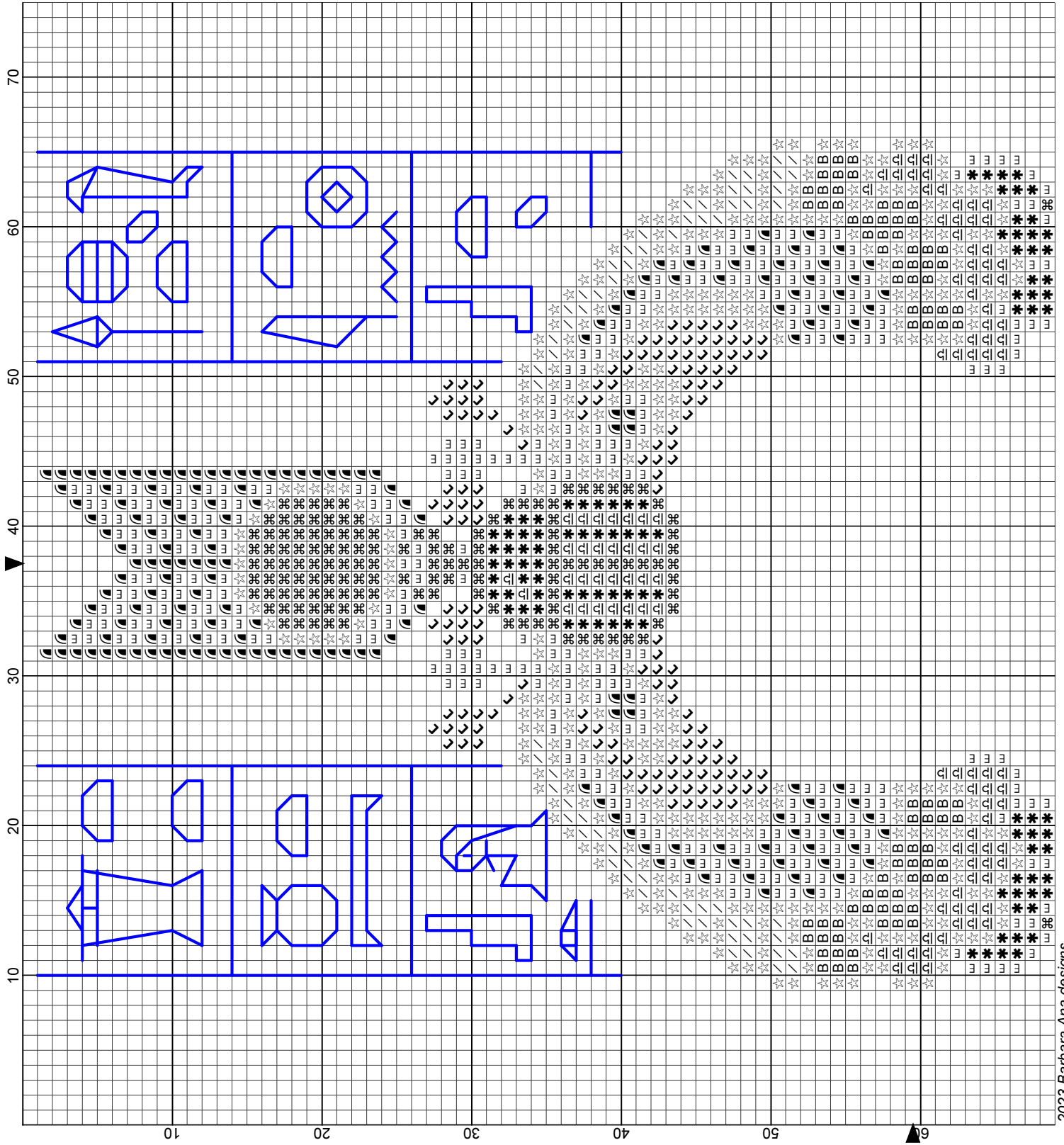
- Legend:
- DMC-598
  - ⦿ DMC-666
  - ✳ DMC-727
  - ◡ DMC-780
  - DMC-958
  - ✳ DMC-3808
  - ◡ DMC-3810
  - DMC-3852
  - ◡ PTB-PB01
- Backstitches:
- DMC-3852

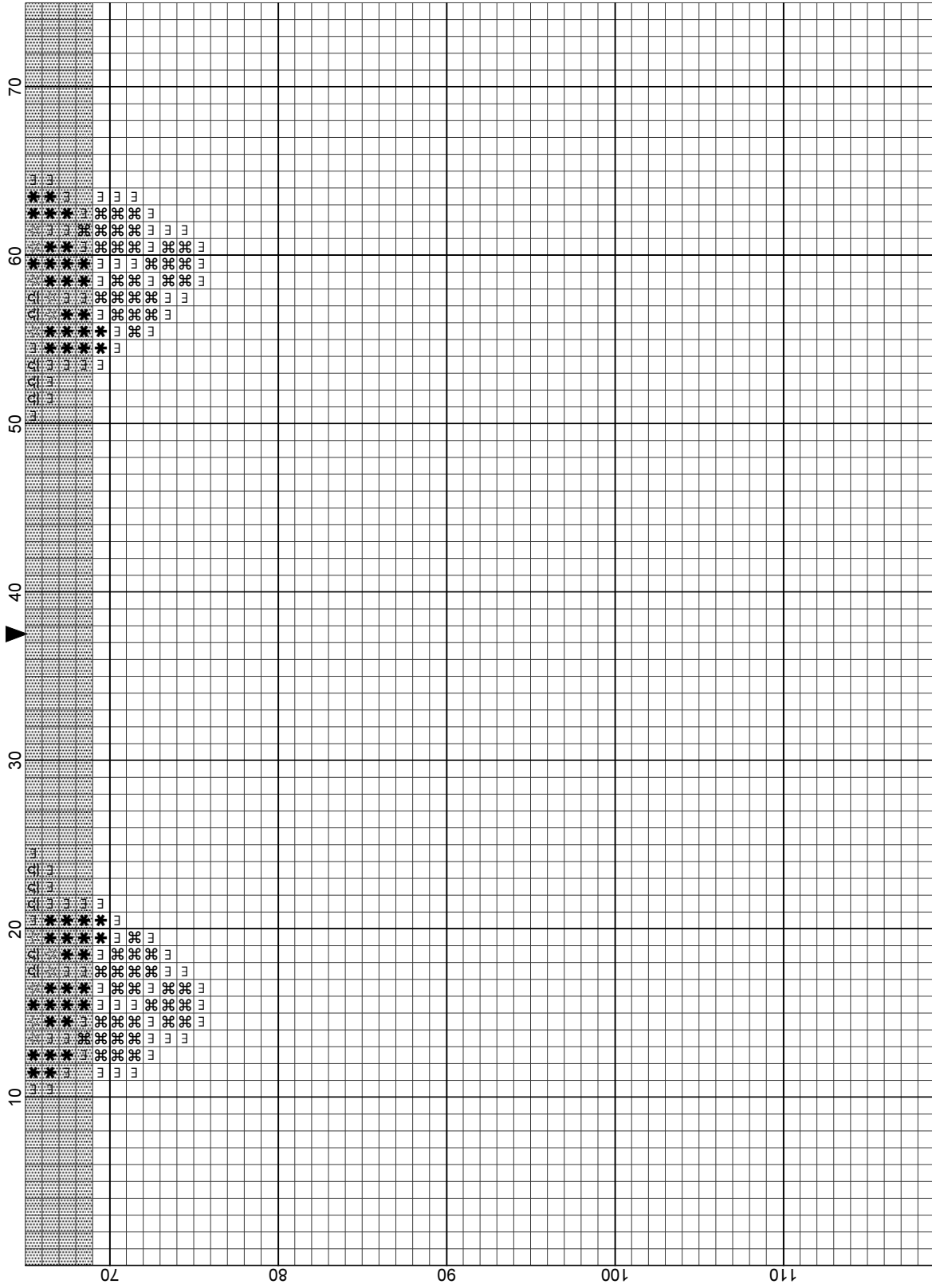




2023 Barbara Ana designs

- Legend:
-  DMC-598
  -  DMC-666
  -  DMC-727
  -  DMC-780
  -  DMC-958
  -  DMC-3808
  -  DMC-3810
  -  DMC-3852
  -  PTB-PB01
- Backstitches:
-  DMC-3852





2023 Barbara Ana designs

Legend:

- DMC-598
  - DMC-666
  - DMC-727
  - DMC-780
  - DMC-958
  - DMC-3808
  - DMC-3810
  - DMC-3852
  - PTB-PB01
- Backstitches:  
DMC-3852