



Barbara Ana
Designs



Winged Dreams Mystery SAL

Barbara Ana Astray Mendez

SAL – PART 2

Fabric: 32 ct. Granite Belfast Linen by Zweigart (color 7025)

Design Area: 5,7" x 6,7" (14.5 cm x 17 cm) - 91 x 107 stitches

Suggested framing: 8 inch / 20 cm hoop

Threads:

- DMC Stranded Cotton (including DMC Color variations 4090, 4030, 4130)
- Kreinik Very Fine Braid #4 3232

Instructions:

Cross Stitches:





- two strands of DMC floss over two fabric threads, use one strand of Kreinik thread





Backstitches:

- key in 1 strand of kreinik 3232, everything else 2 strands of DMC 3371

Legend:

 DCV-4030
 DMC-921
 DMC-3371
 DMC-3865

 DCV-4090
 DMC-976
 DMC-3827
 DMC-975

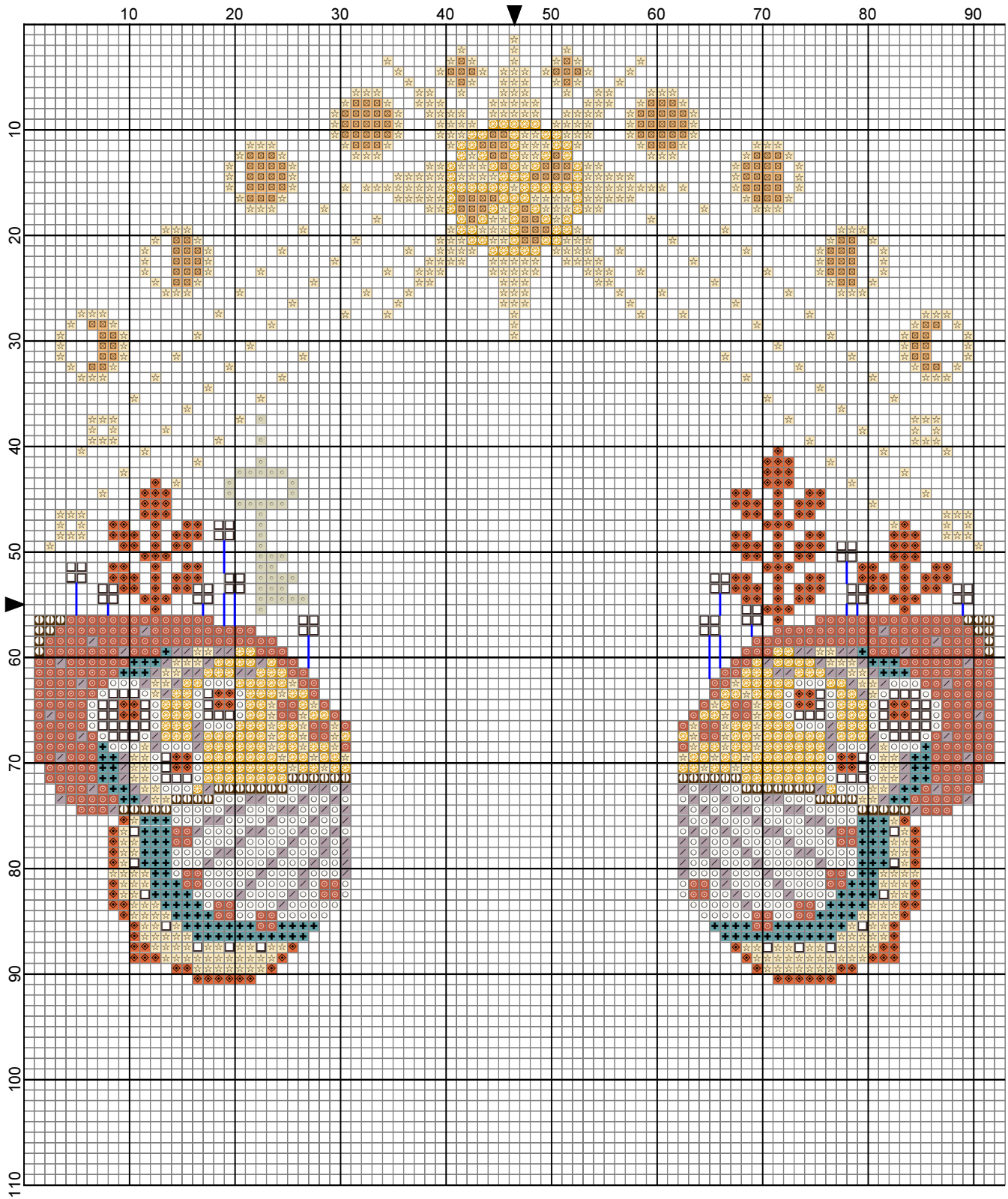
 DMC-898
 DMC-452
 DMC-783
 DCV-4130

 DMC-919
 KR4-3232

Backstitches:

 DMC-3371

 KR4-3232

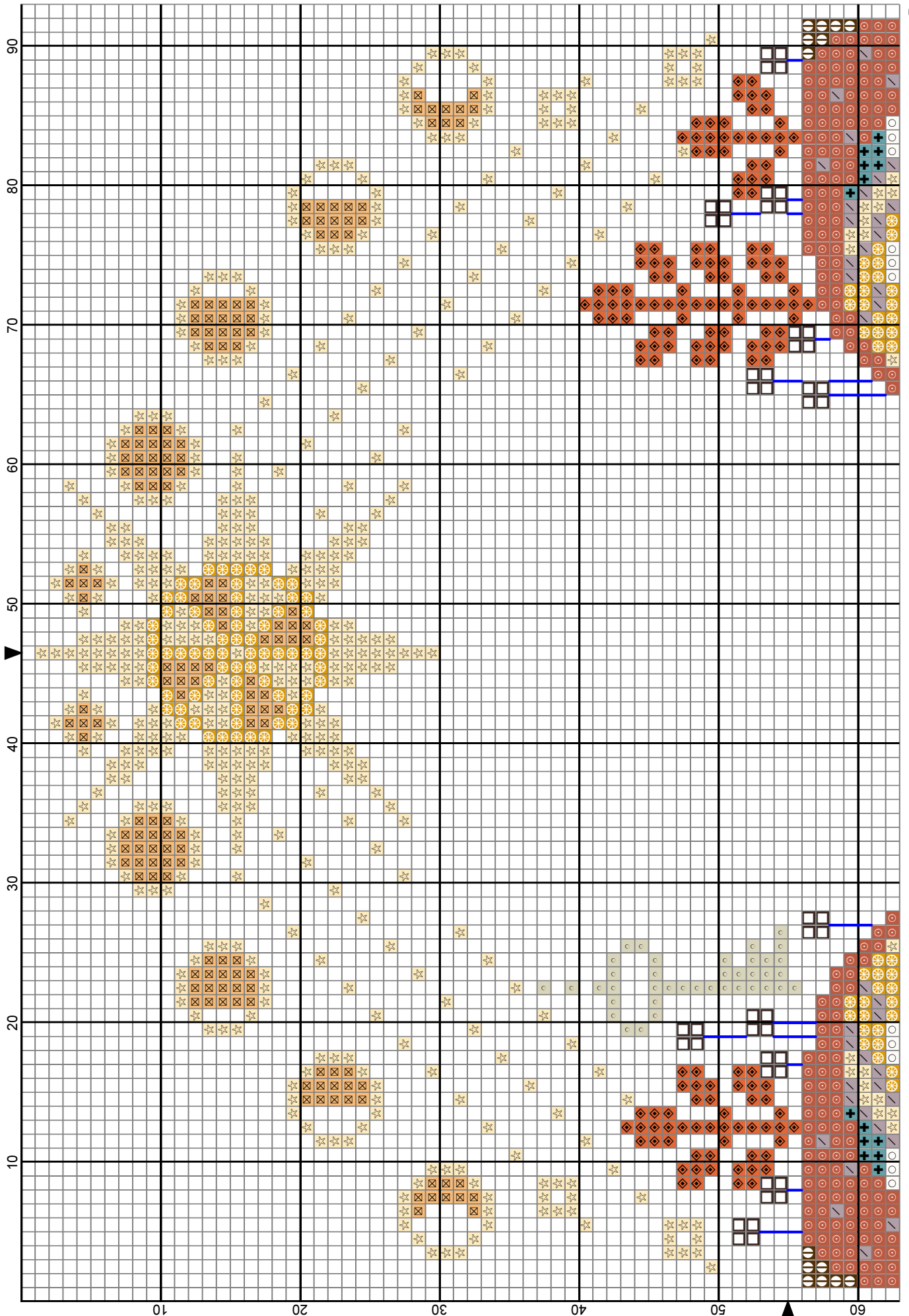


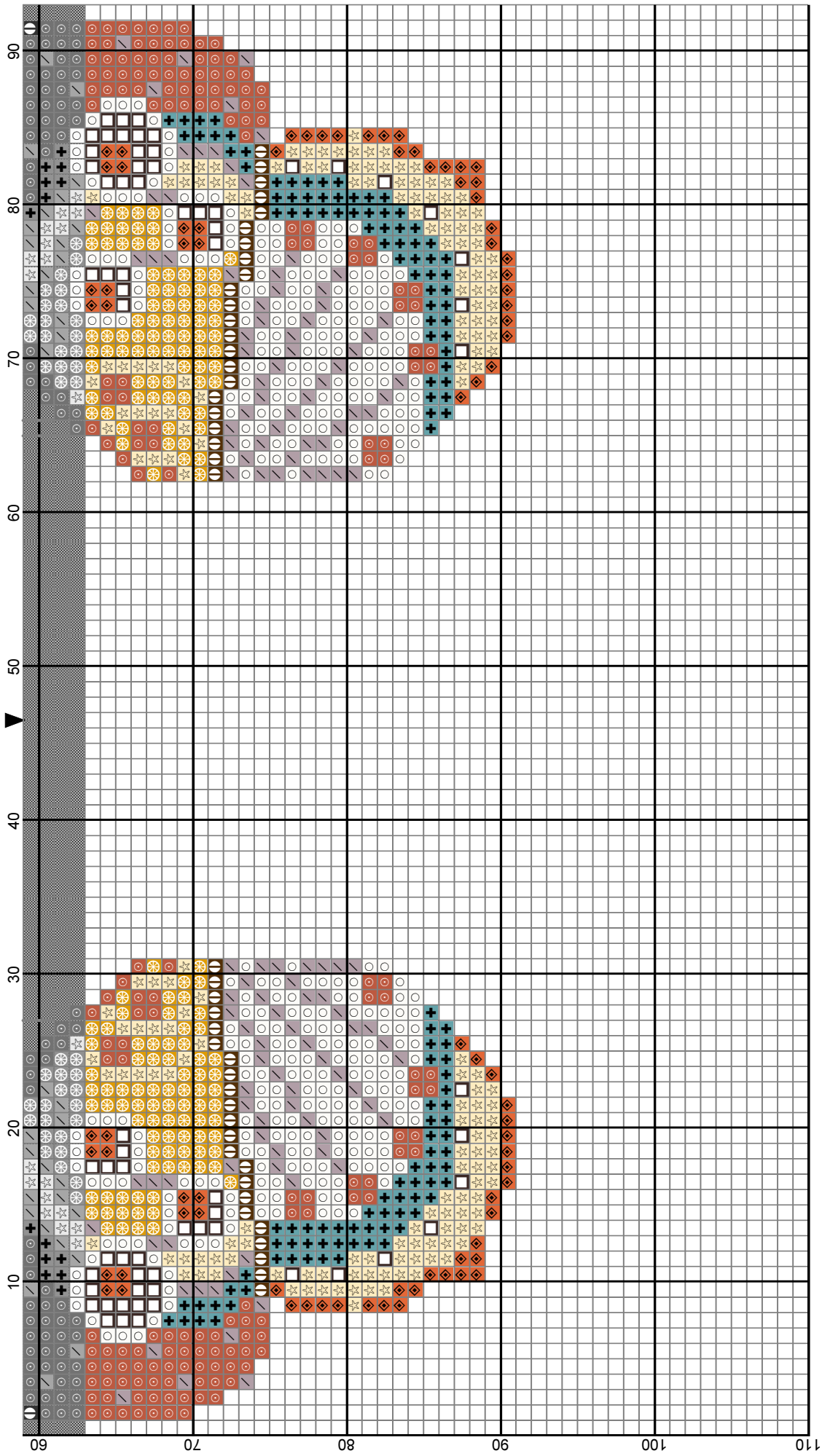
Legend:

	DCV-4030		DMC-3865		DMC-898		DCV-4130
	DMC-921		DCV-4090		DMC-452		KR4-3232
	DMC-3371		DMC-3827		DMC-783		

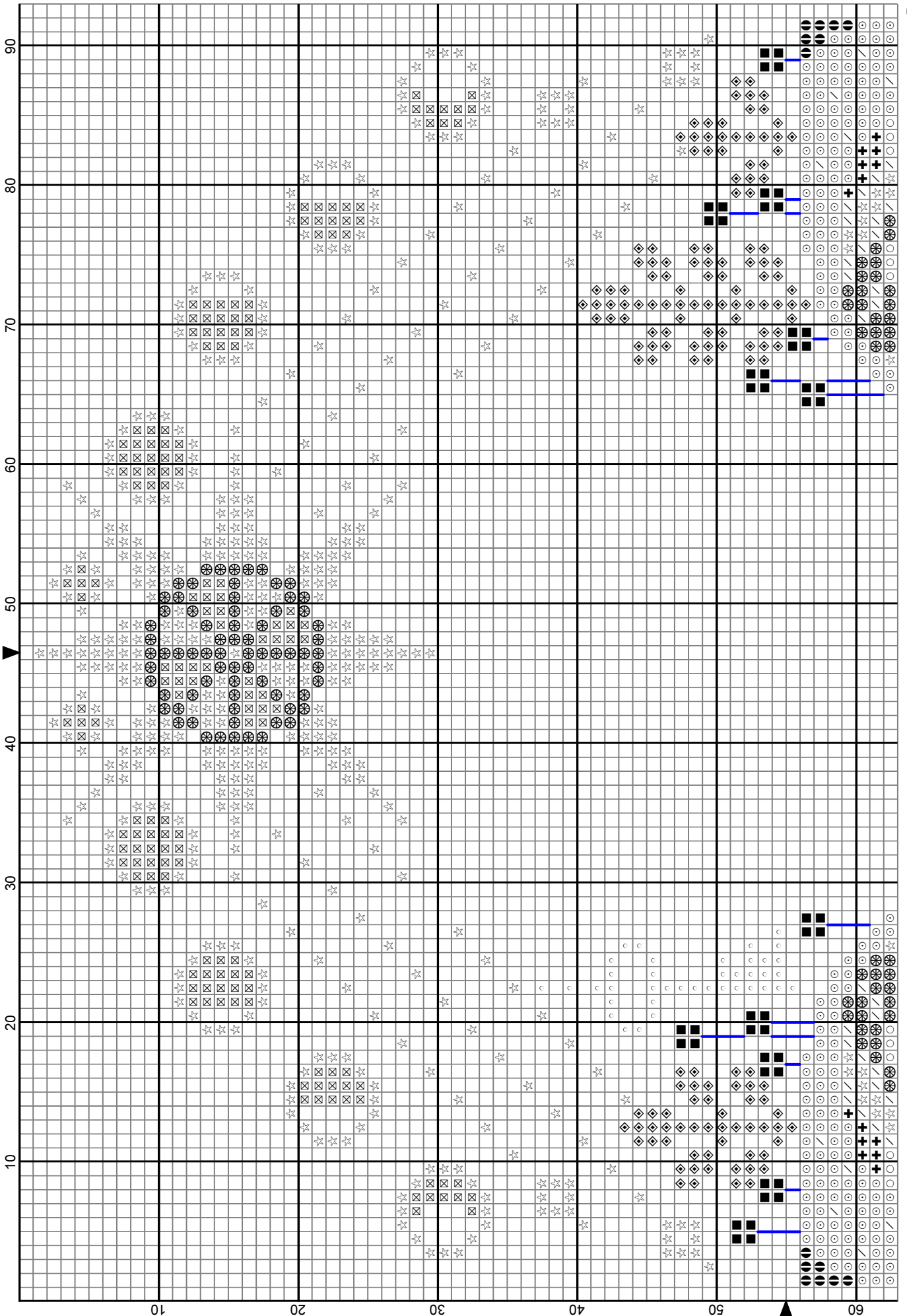
Backstitches:

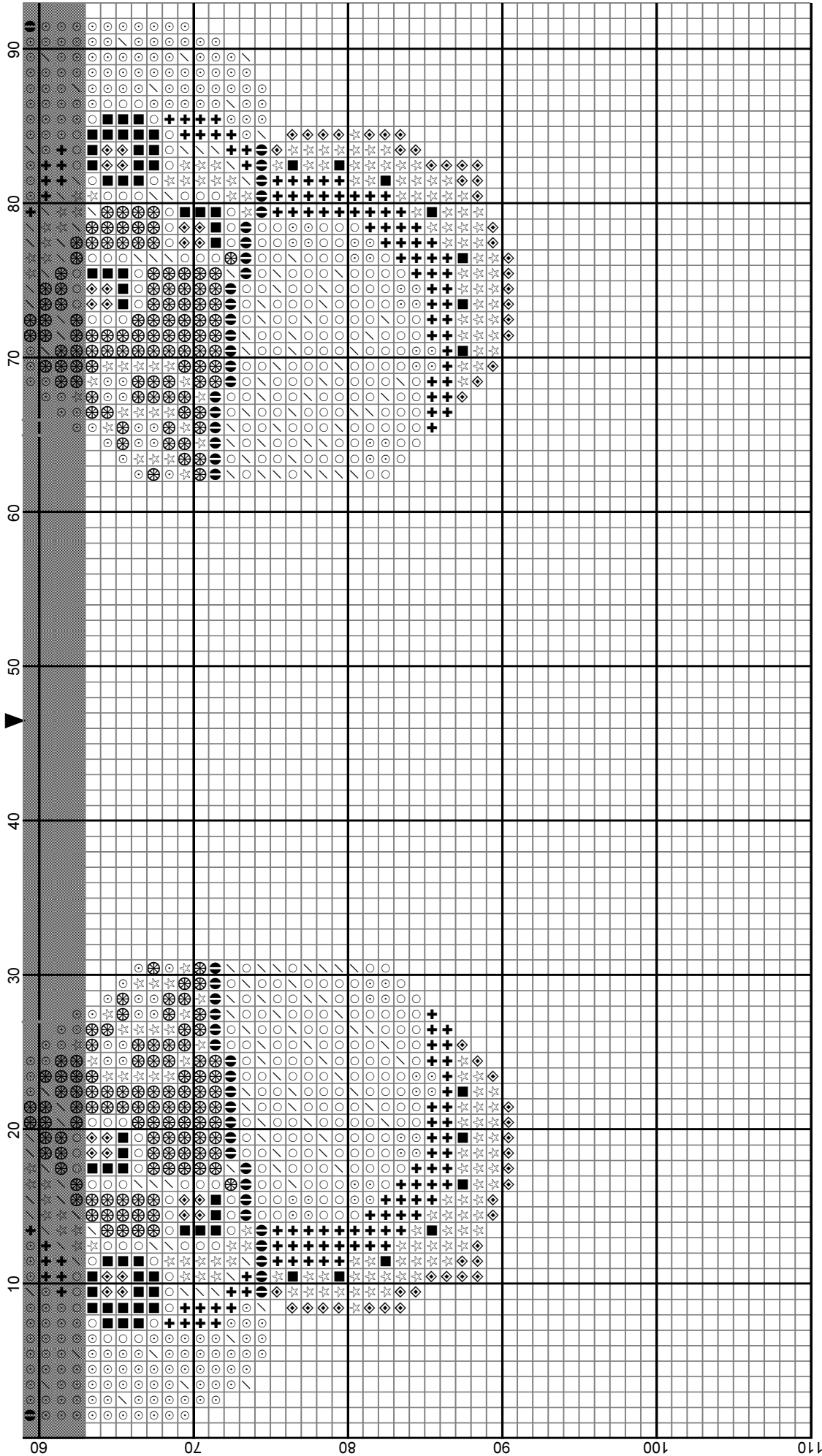
DMC-3371





- Legend:**
- DCV-4030
 - DMC-921
 - DMC-3371
 - DMC-3865
 - DCV-4090
 - DMC-3371
 - DMC-3865
 - DCV-4090
 - DMC-3827
 - DMC-898
 - DMC-452
 - DMC-783
 - DCV-4130
 - KR4-3232
- Backstitches:**
- DMC-3371





- Legend:
-  DCV-4030
 -  DMC-921
 -  DMC-3371
 -  DMC-3865
 -  DCV-4090
 -  DMC-3827
 -  DMC-898
 -  DMC-452
 -  DMC-783
 -  DCV-4130
 -  KR4-3232
- Backstitches:
-  DMC-3371