



Barbara Ana
Designs



FLORAL DREAMS Mystery SAL

Barbara Ana Astray Mendez

SAL– Part 2

Fabric: 25 ct Pacific Metallic Blue Lugana from Zweigart

Design Area: 5,12" x 7,08" (13 cm x 18 cm) - 66 x 94 stitches

Threads:

- DMC Stranded Cotton
- DMC Rayon (S3820)

Cross Stitches:

- Two strands of cotton floss or rayon floss over two fabric threads.
- Color listed as 453* is a blend of 1 strand of 453 and 1 strand of 3861

Backstitches:

- One strand of DMC 3371

Legend:

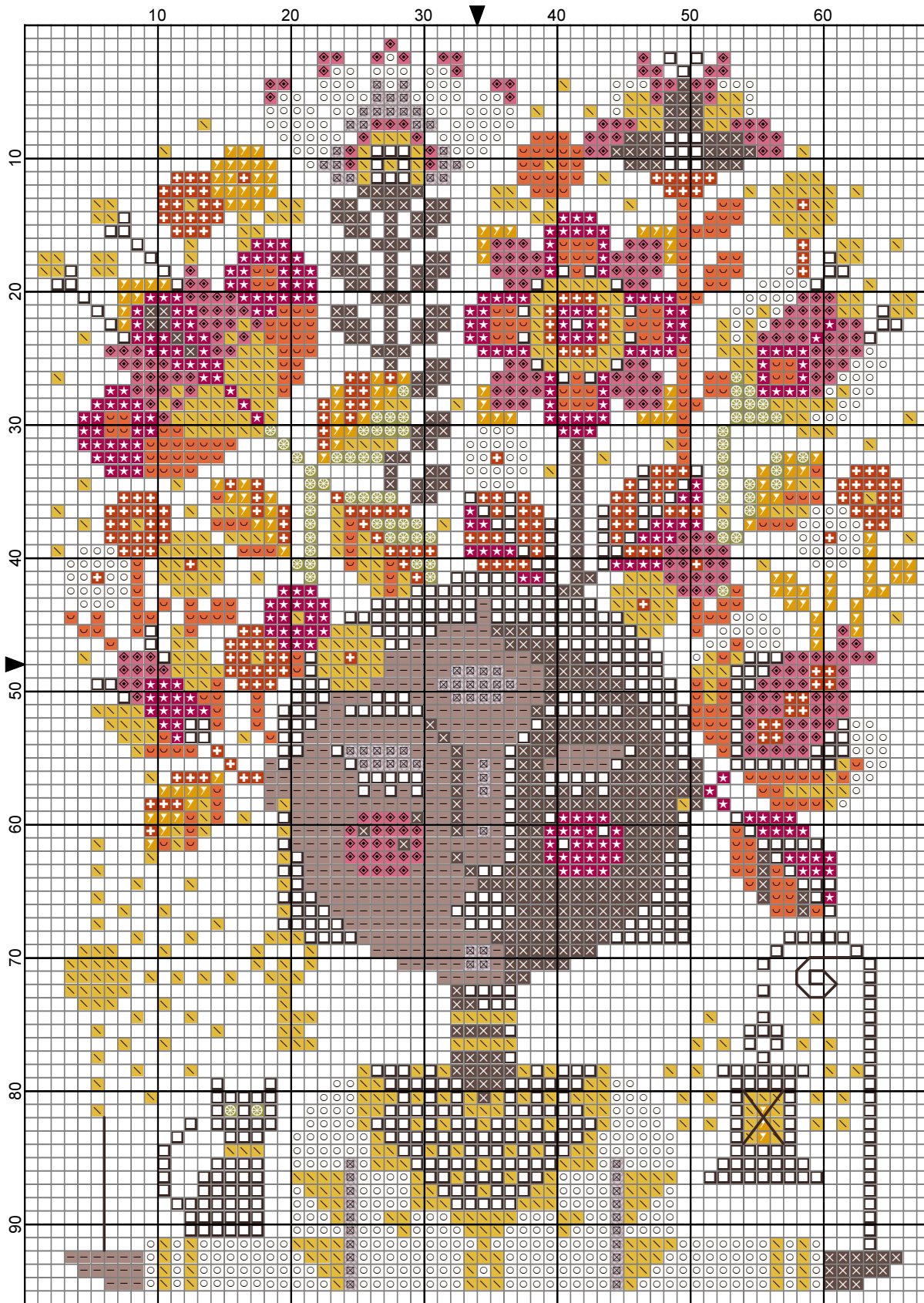
		DMC-919			DMC-150			DMC-3865			DMC-732
		DMC-921			DMC-3731			DMC-779			DMC-3861
		DMC-783			DMC-3371			DMR-S3820			DMC-453*

Backstitches:

— DMC-3371



©2022 Barbara Ana Designs

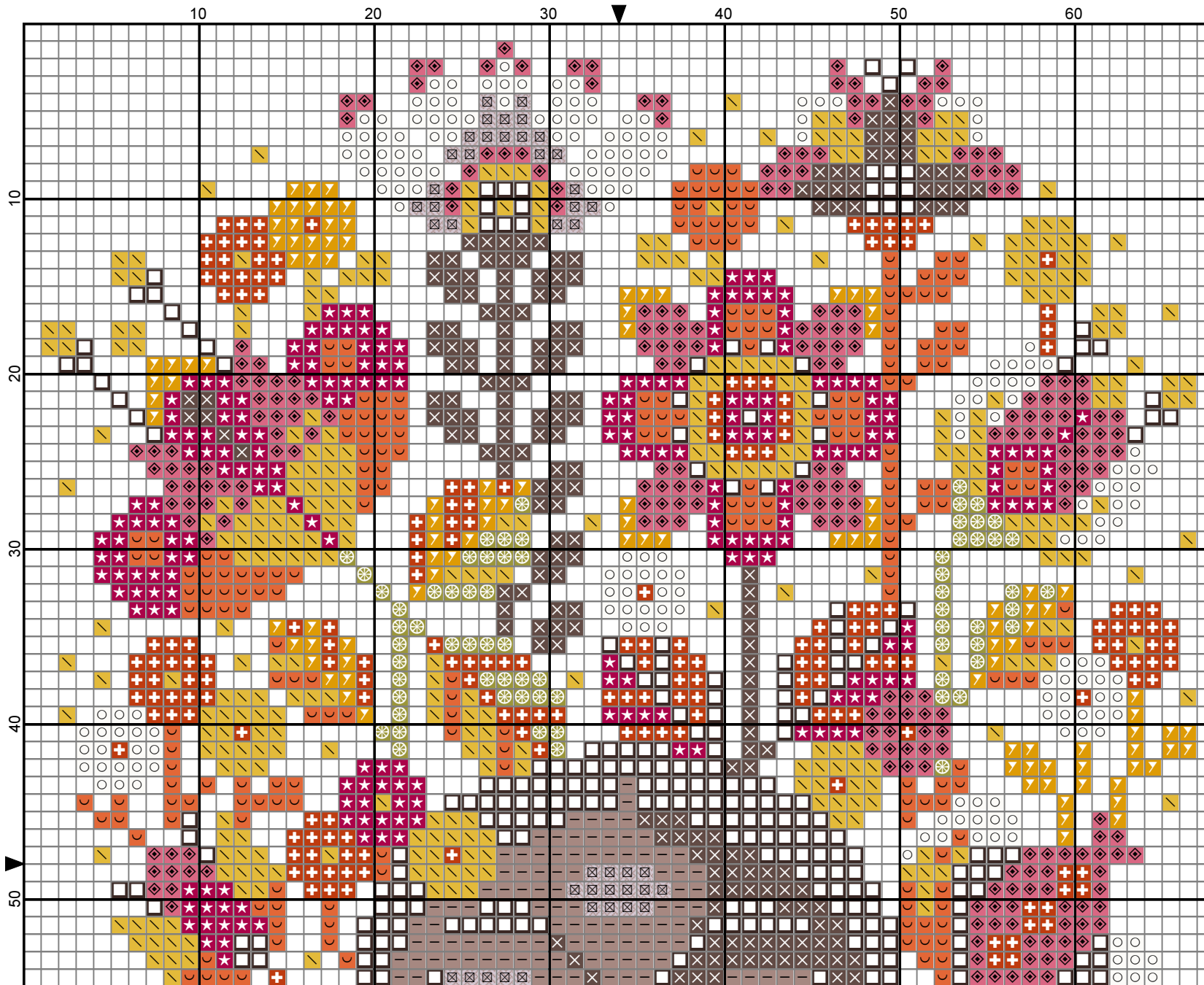


2022 Barbara Ana Designs

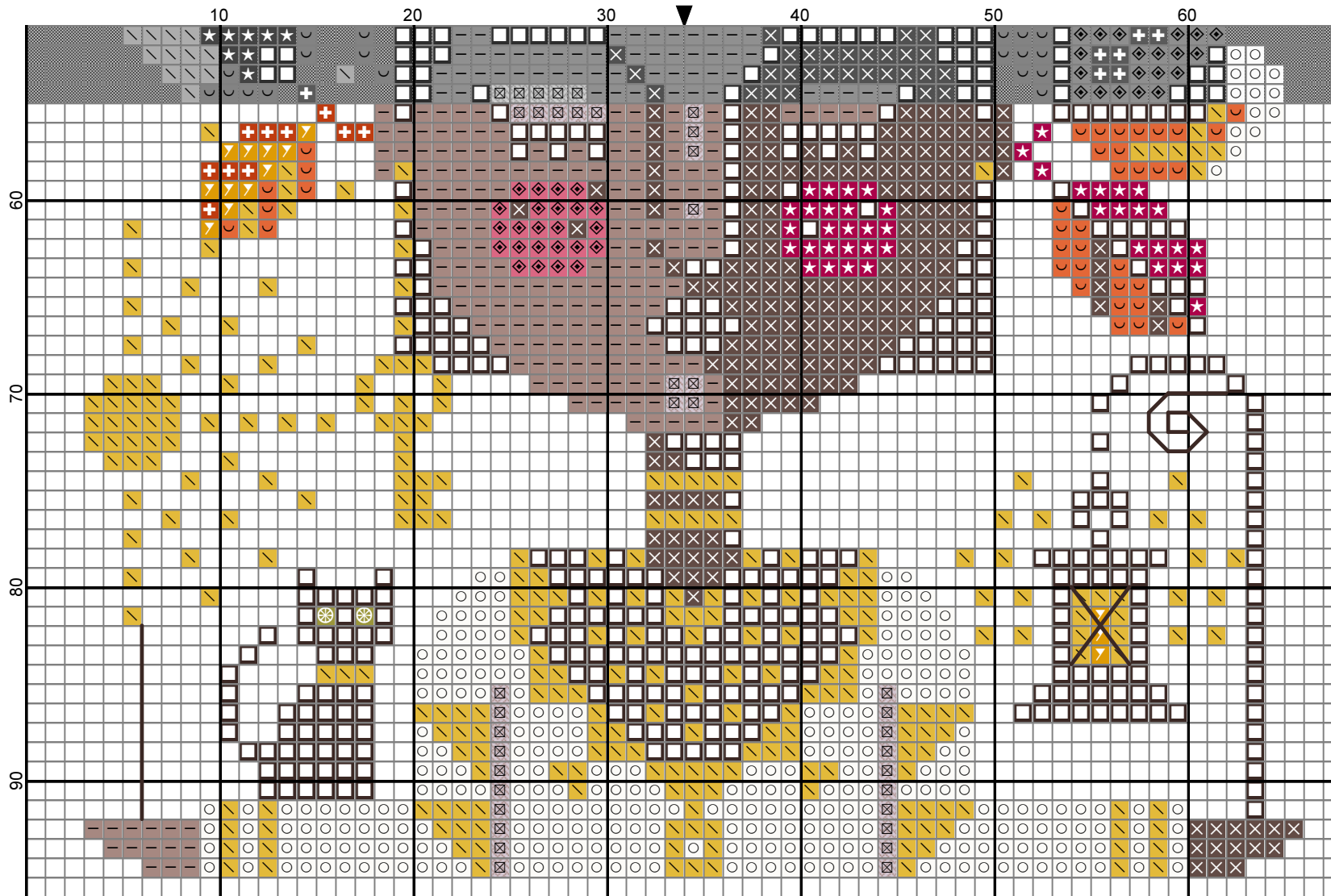
Legend:

- | | | | | | | | |
|--|---------|--|----------|--|-----------|--|----------|
| | DMC-919 | | DMC-150 | | DMC-3865 | | DMC-732 |
| | DMC-921 | | DMC-3731 | | DMC-779 | | DMC-3861 |
| | DMC-783 | | DMC-3371 | | DMR-S3820 | | DMC-453* |

Backstitches:
 DMC-3371



2022 Barbara Ana Designs



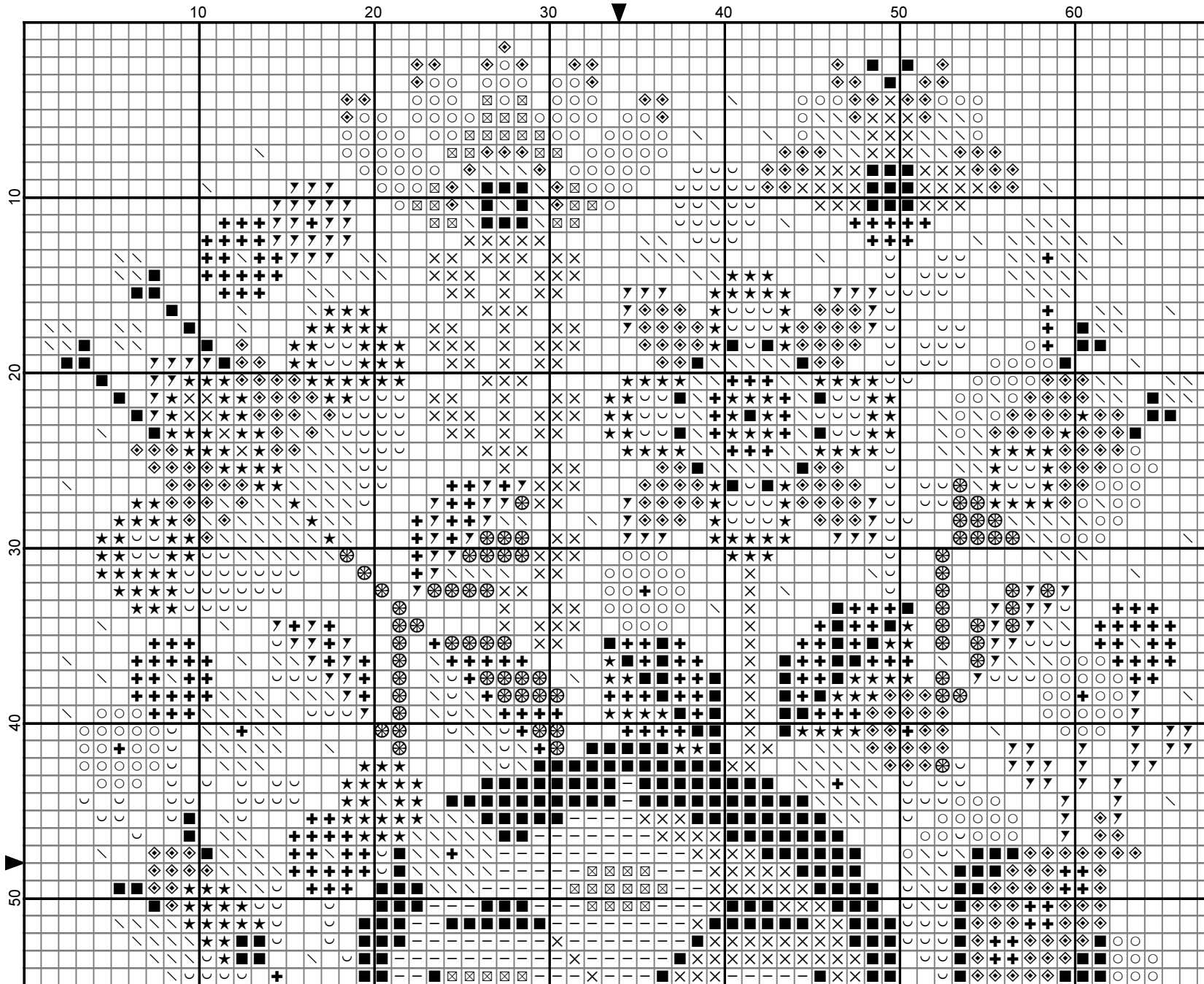
2022 Barbara Ana Designs

Legend:

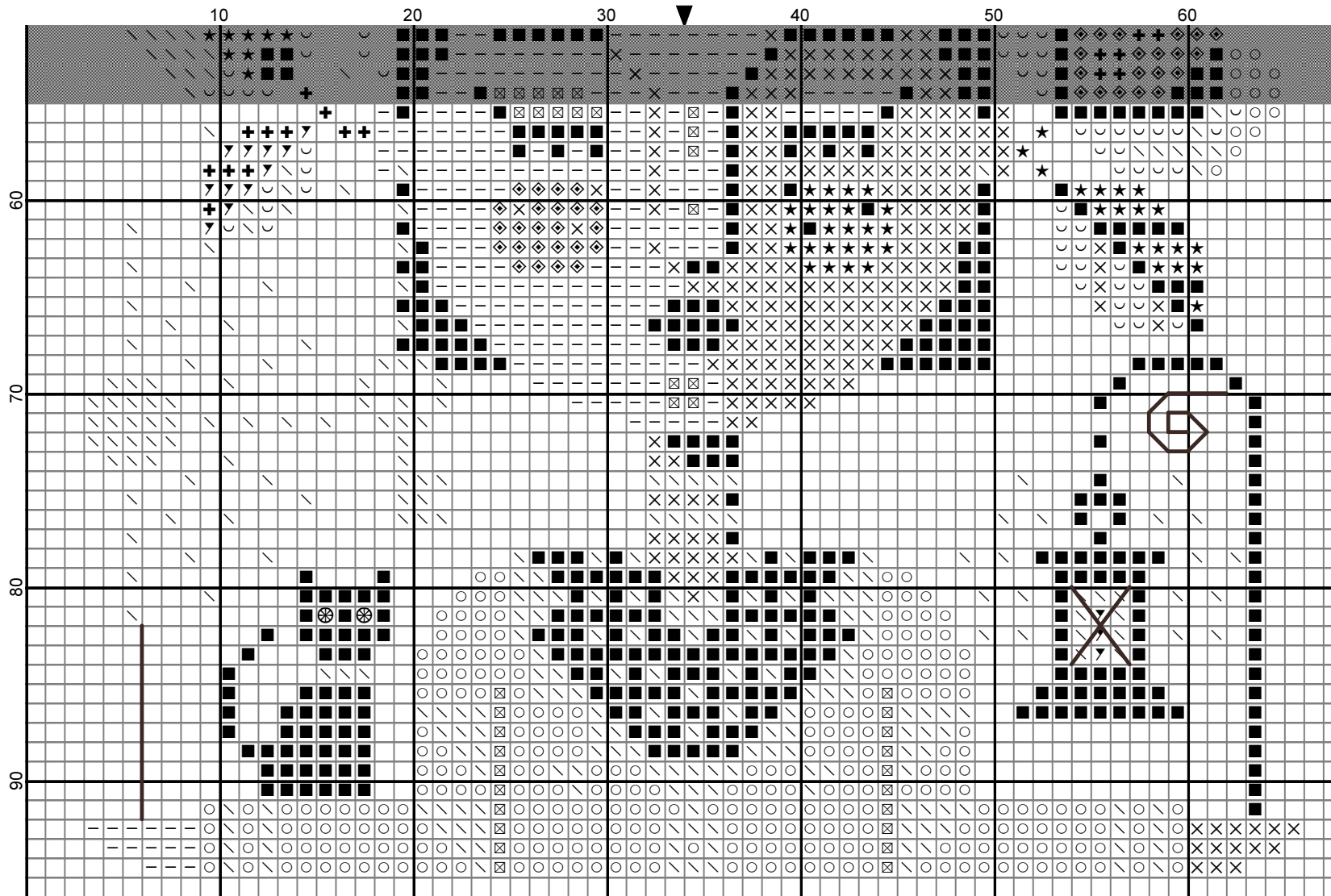
- | | | | | | |
|---|---|--|--|---|--|
|  DMC-919 |  DMC-783 |  DMC-3731 |  DMC-3865 |  DMR-S3820 |  DMC-3861 |
|  DMC-921 |  DMC-150 |  DMC-3371 |  DMC-779 |  DMC-732 |  DMC-453* |

Backstitches:

-  DMC-3371



2022 Barbara Ana Designs



2022 Barbara Ana Designs

Legend:

- | | | | | | |
|---------|---------|----------|----------|-----------|----------|
| DMC-919 | DMC-150 | DMC-3731 | DMC-3865 | DMR-S3820 | DMC-3861 |
| DMC-921 | DMC-150 | DMC-3371 | DMC-779 | DMC-732 | DMC-453* |

Backstitches:

- DMC-3371