



Barbara Ana
Designs

Christmas 2021 Mystery SAL - Part 1

Barbara Ana Astray Mendez

Fabric: 32 ct. Zweigart Murano (Lugana) - Colonial blue 522, or any Medium Blue or Neutral Color Linen of your choice

Design Area: 6,56" x 4,50" (16,7 cm x 11,5 cm) -105 x 72 stitches

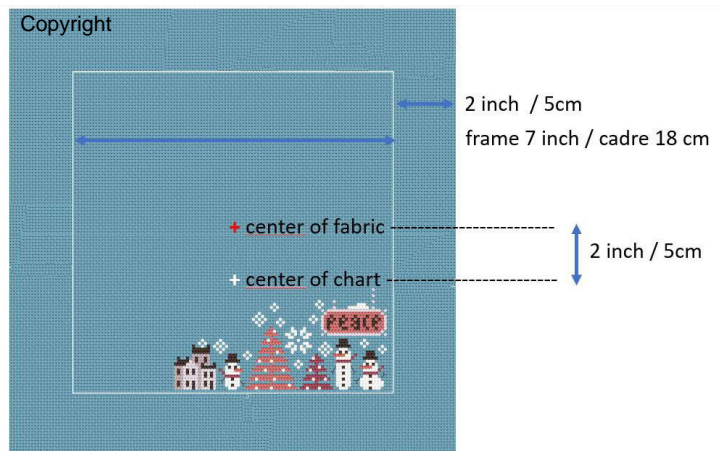
Suggested frame: Square 7 x 7 inch (18 x 18 cm)

Suggested fabric size:

Including fabric surrounding design and 2 inch allowance on each side for framing:
11 inch x 11 inch (28 cm x 28 cm)

Positioning:

When stitching on recommended fabric size, the center of the chart should be positioned about 2 inch (5 cm) lower than the center of the fabric, so that there is more blue fabric above. The lower part of the stitched piece will align with the frame.

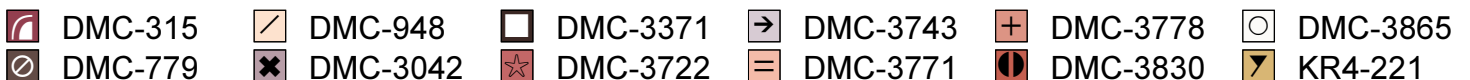


Threads:

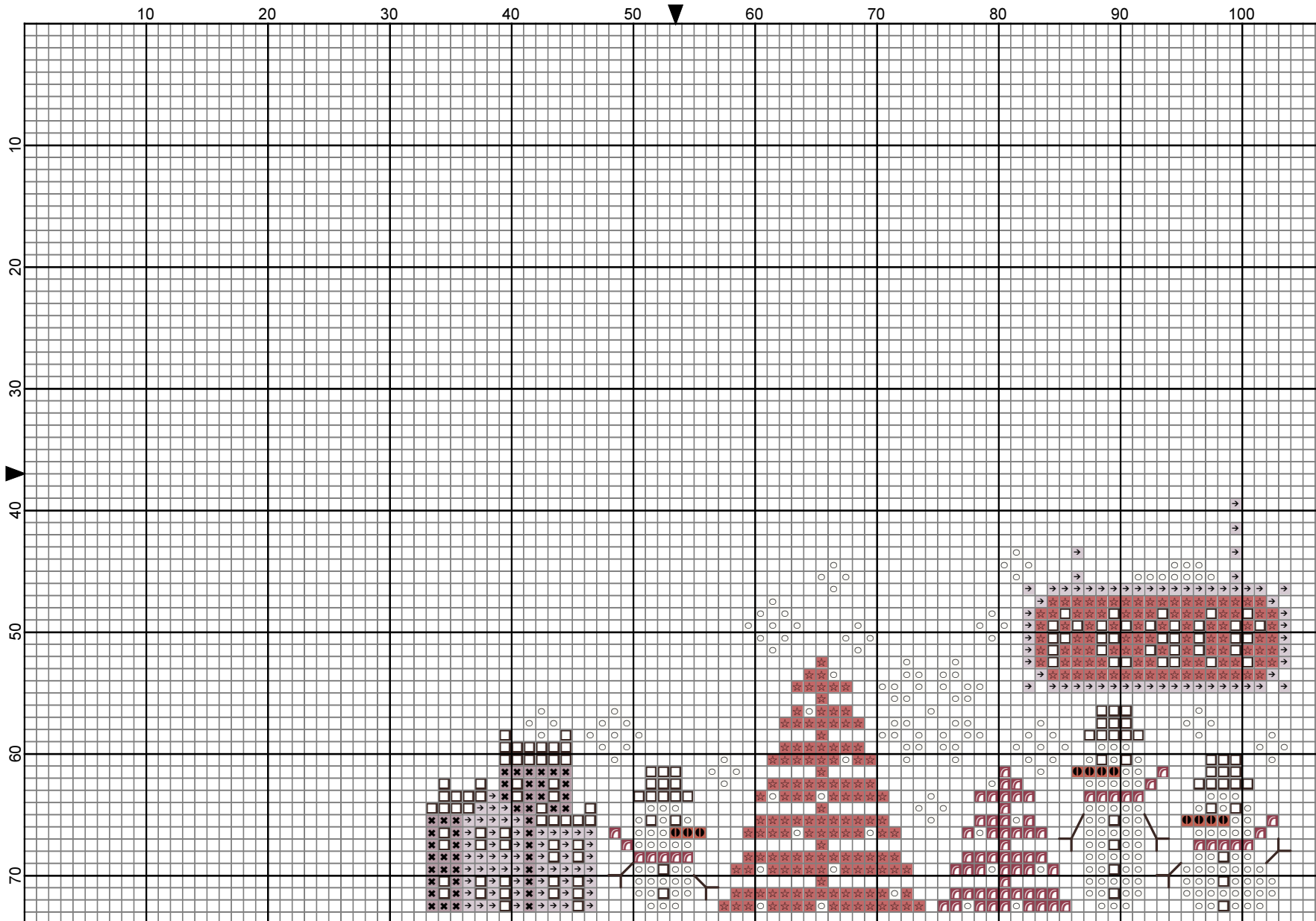
- DMC Stranded Cotton
- Kreinik Very Fine Braid #4 Antique Gold #221









Cross Stitches: - Two strands of floss over two fabric threads. One strand of Kreinik Antique Gold

Backstitches: - One strand of DMC 3371

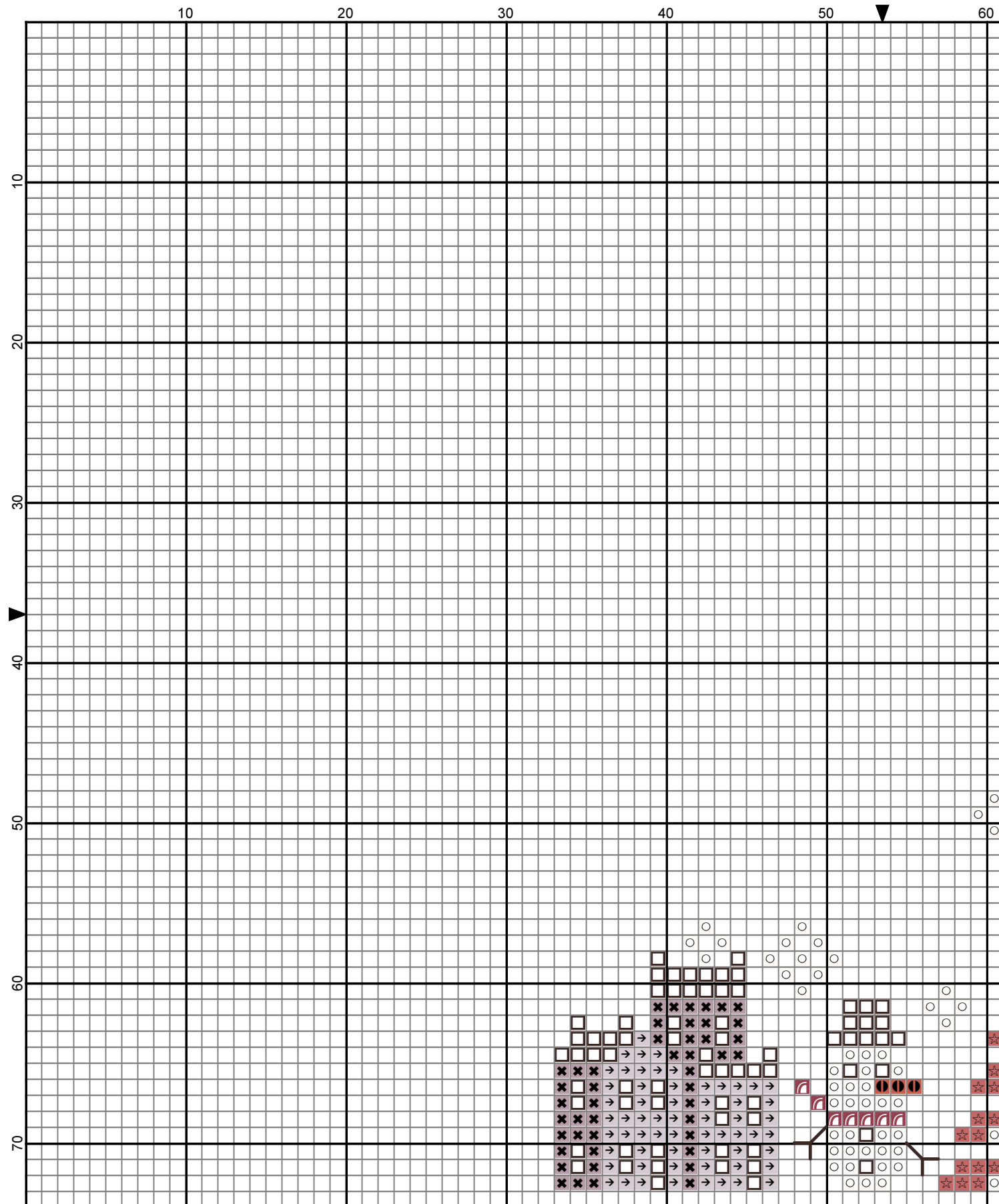


For personal use only. This design may not be kitted, sold, shared in any way or reproduced in any form except by needle and thread. © 2021 Barbara Ana Designs



- Legend:**
-  DMC-315
 -  DMC-3042
 -  DMC-3371
 -  DMC-3722
 -  DMC-3743
 -  DMC-3830
 -  DMC-3865
- Backstitches:**
-  DMC-3371

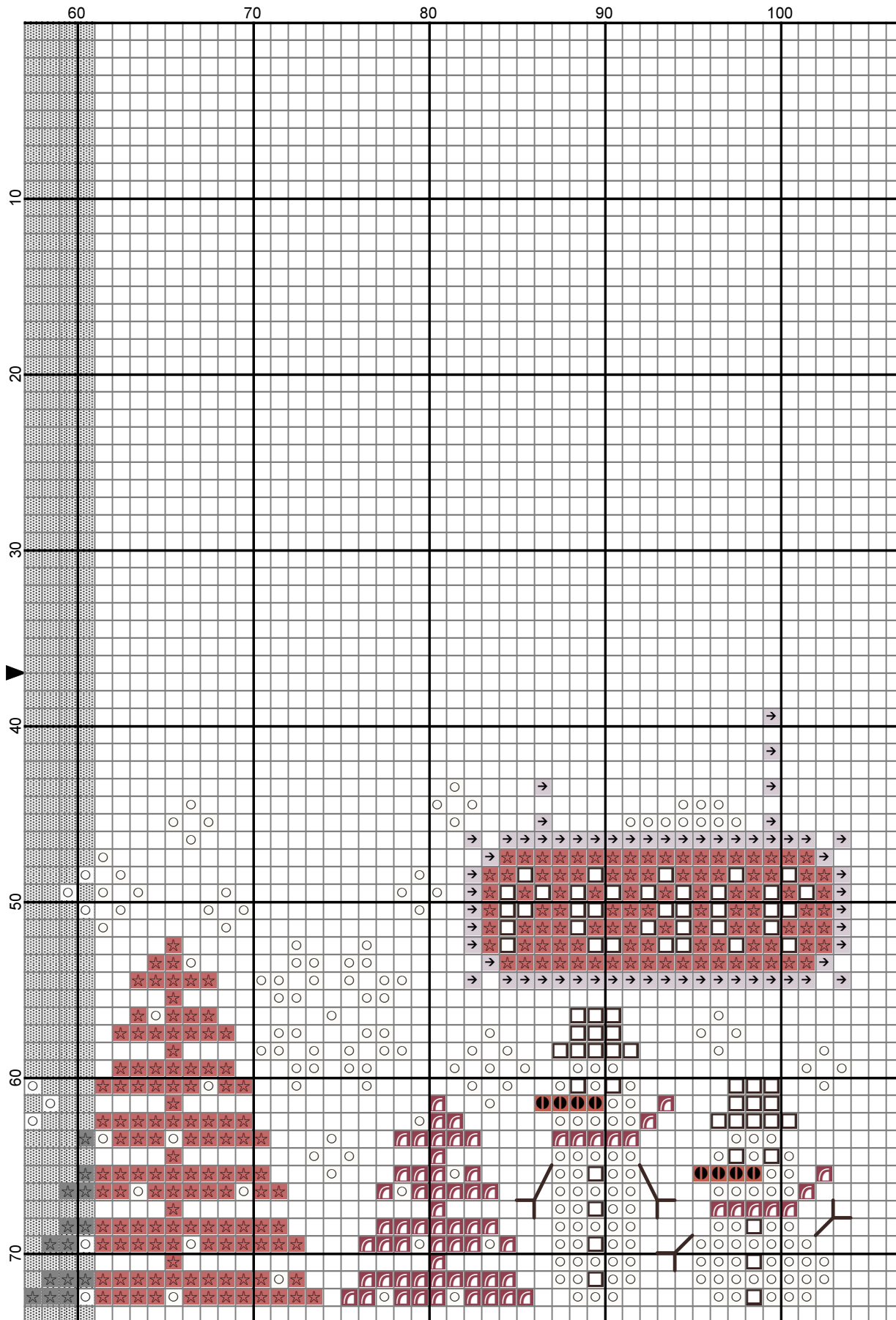
2021 Barbara Ana designs



2021 Barbara Ana designs

Legend:

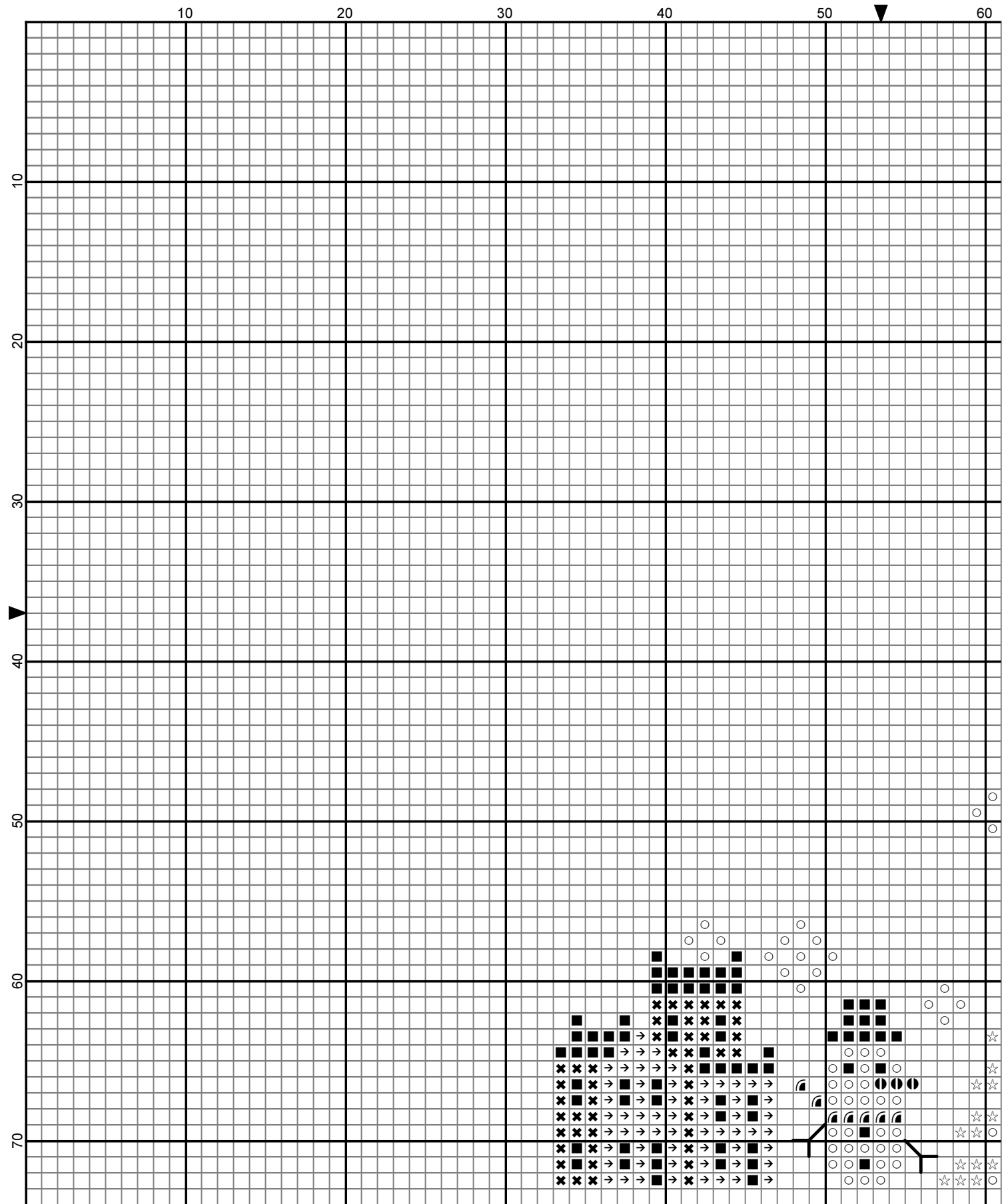
- | | | | | | | | |
|--|----------|--|----------|--|----------|--|----------|
| | DMC-315 | | DMC-3371 | | DMC-3743 | | DMC-3865 |
| | DMC-3042 | | DMC-3722 | | DMC-3830 | | |



2021 Barbara Ana designs








Backstitches:

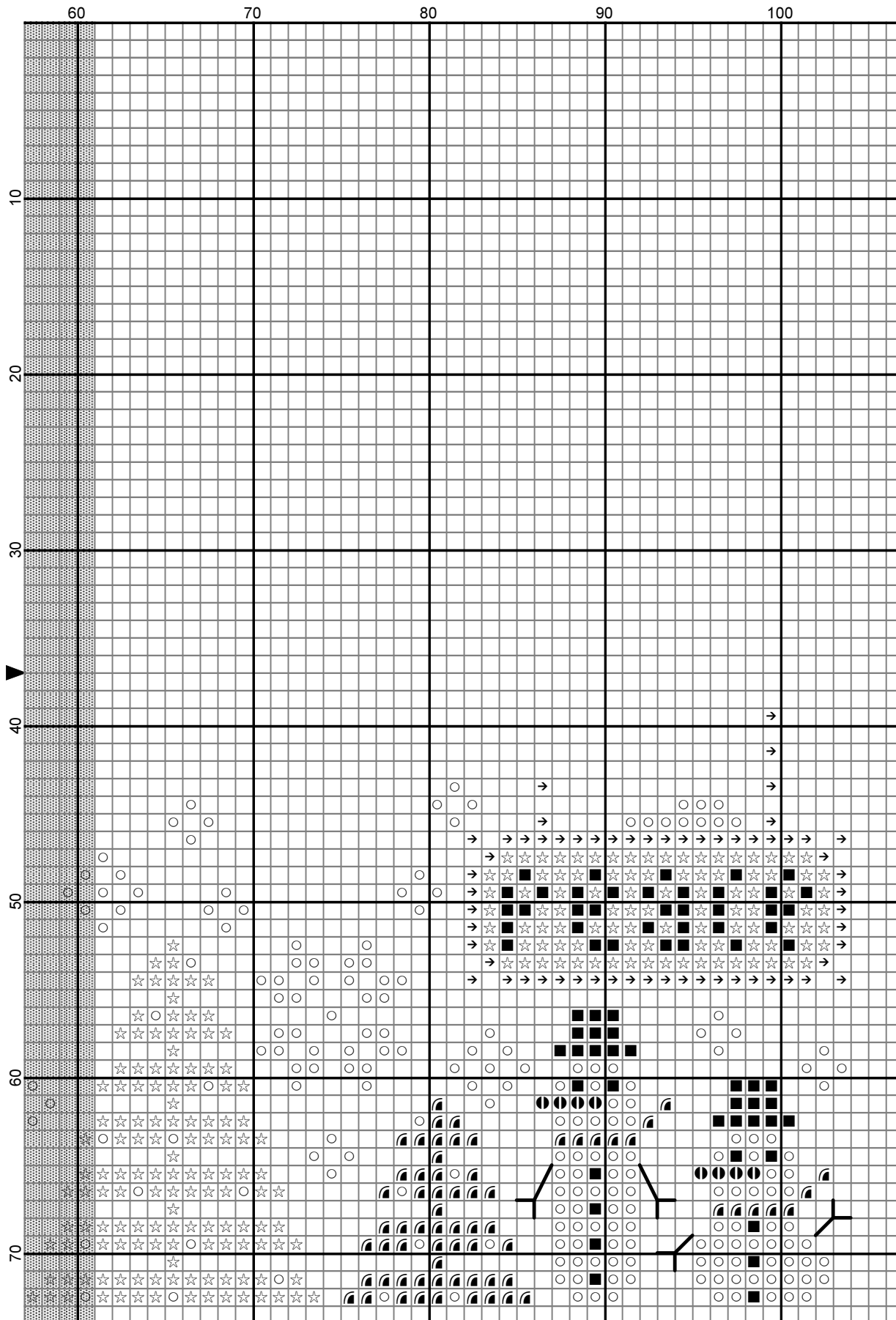
— DMC-3371



2021 Barbara Ana designs

Legend:

-  DMC-315  DMC-3371  DMC-3743  DMC-3865
-  DMC-3042  DMC-3722  DMC-3830



2021 Barbara Ana designs

Backstitches:

— DMC-3371