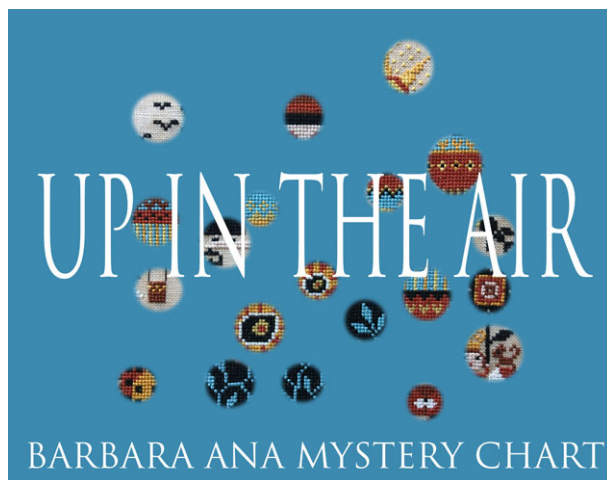




Barbara Ana  
Designs

## Up in the air

Mystery chart - Part 4  
Barbara Ana Astray Mendez



**Fabric:** 32 ct. Amber Linen from Wichelt or 32 ct. Vintage Country Mocha (3009) Linen from Zweigart

**Design Area:** 8,00 inch wide x 7,31 inch high (128 x 117 stitches)

### INSTRUCTIONS

#### Cross Stitches:







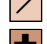
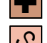


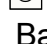
- Two strands of floss over two fabric threads.

#### BackStitches:

- One strand of DMC 310

### LEGEND DMC Stranded Cotton

Legend:

-  DMC-300
-  DMC-310
-  DMC-597
-  DMC-783
-  DMC-833
-  DMC-919
-  DMC-950
-  DMC-3064
-  DMC-3771
-  DMC-3821
-  DMC-3865

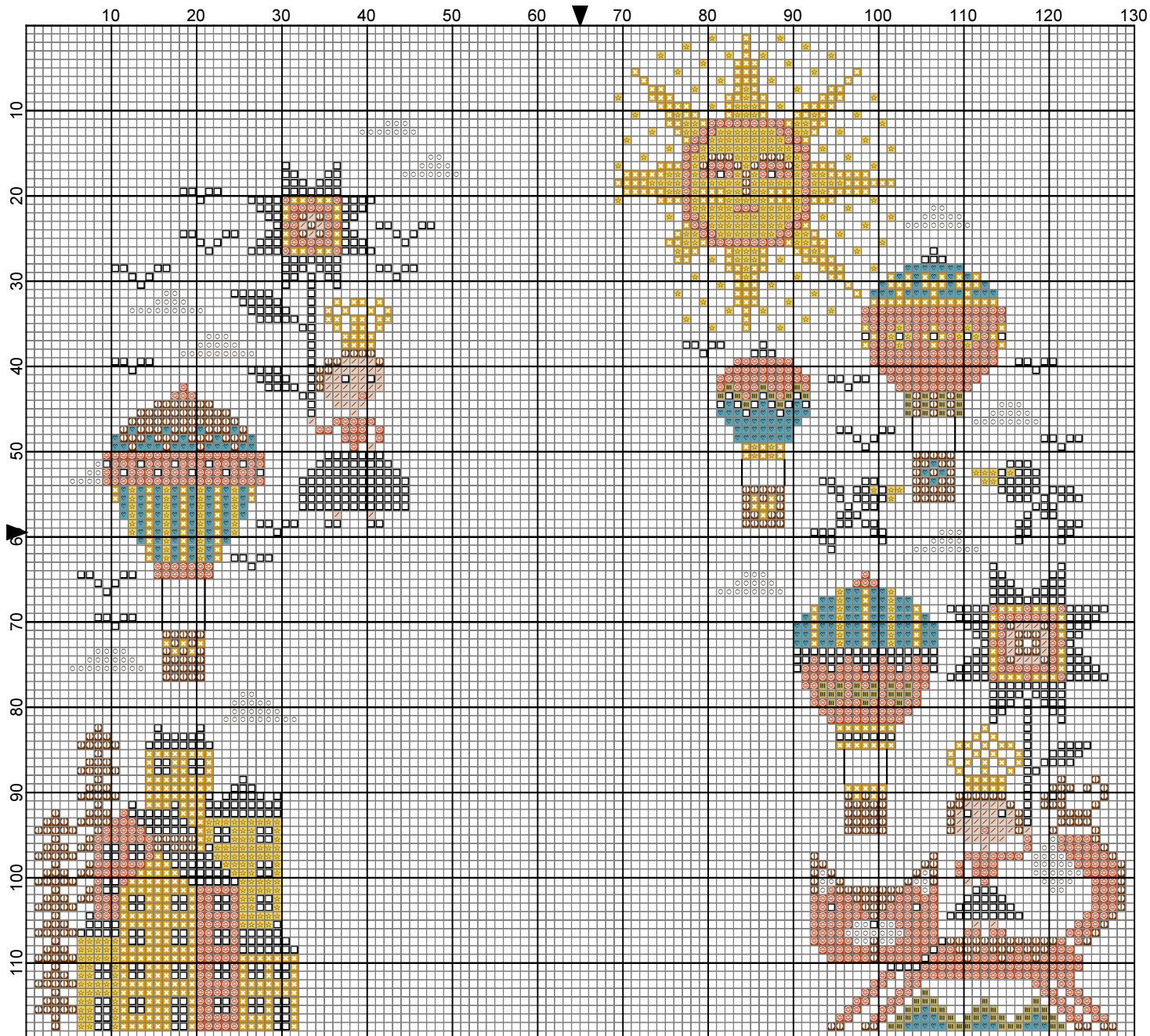
Backstitches:

— DMC-310



Please refer to overview  
chart for positioning this part

For personal use only. This design may not be kitted, sold, shared  
in any way or reproduced in any form except by needle and thread.  
© 2021 Barbara Ana Designs



2021 Barbara Ana designs

OVERVIEW - Please refer to this overview for positioning this part

Charts:

- Overview
- Color: Full chart pages 1 to 4
- Color: Close up of this part
- B&W: Full chart pages 1 to 4
- B&W: Close up of this part

10

20

30

40

50

60



10

20

30

40

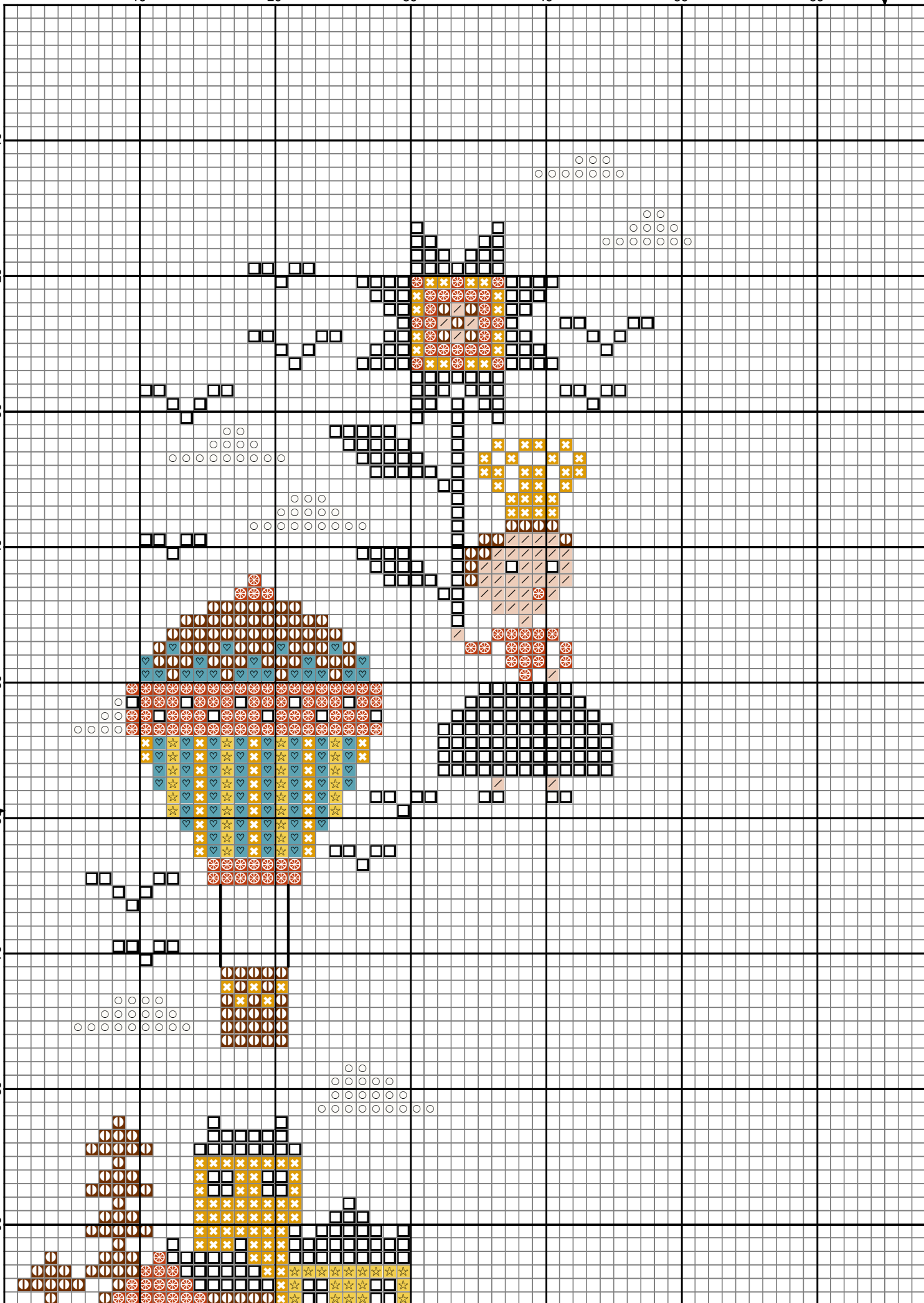
50

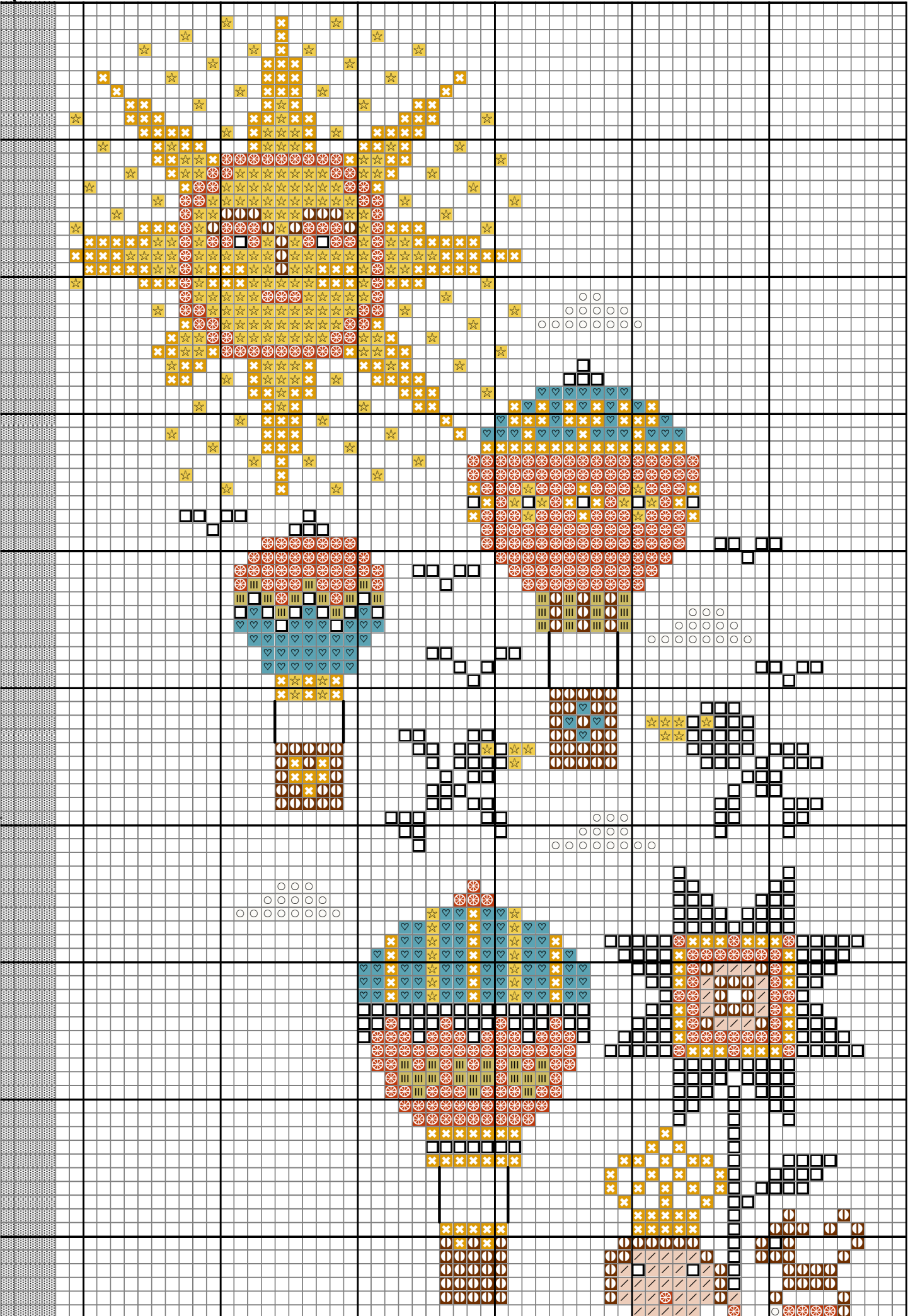
60

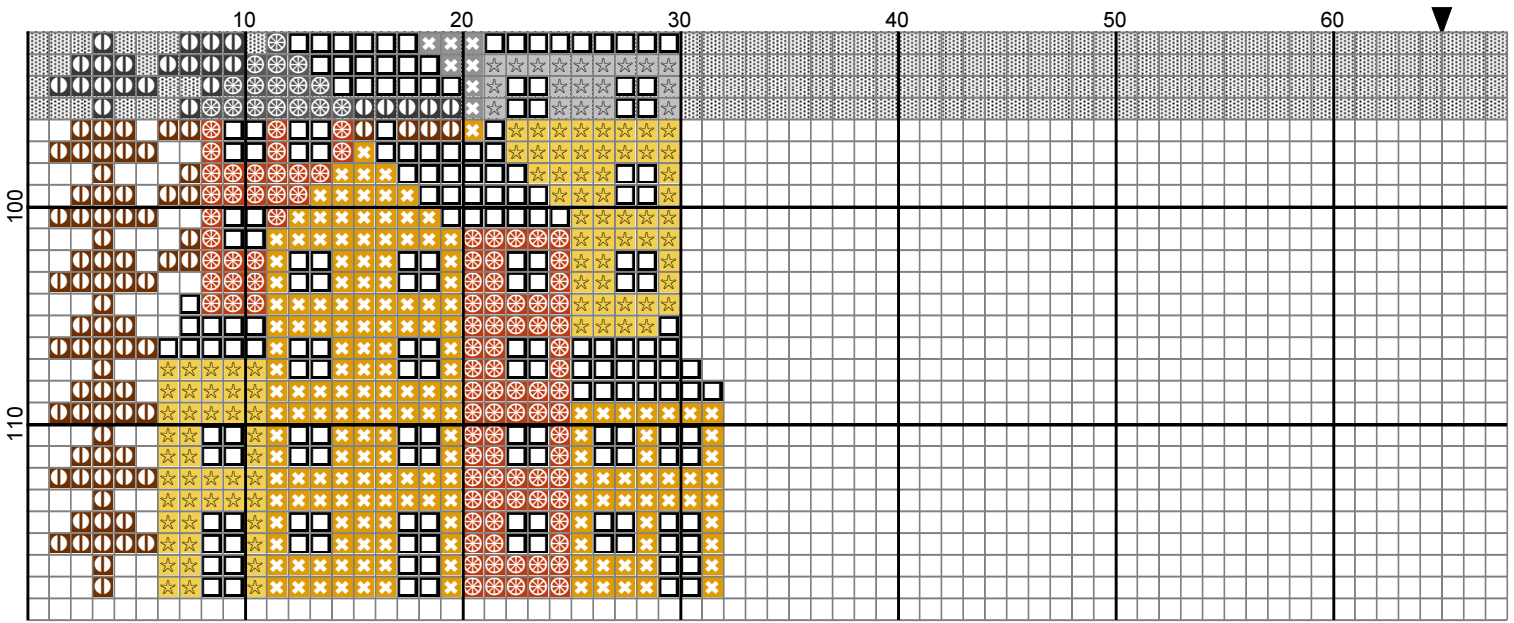
70

80

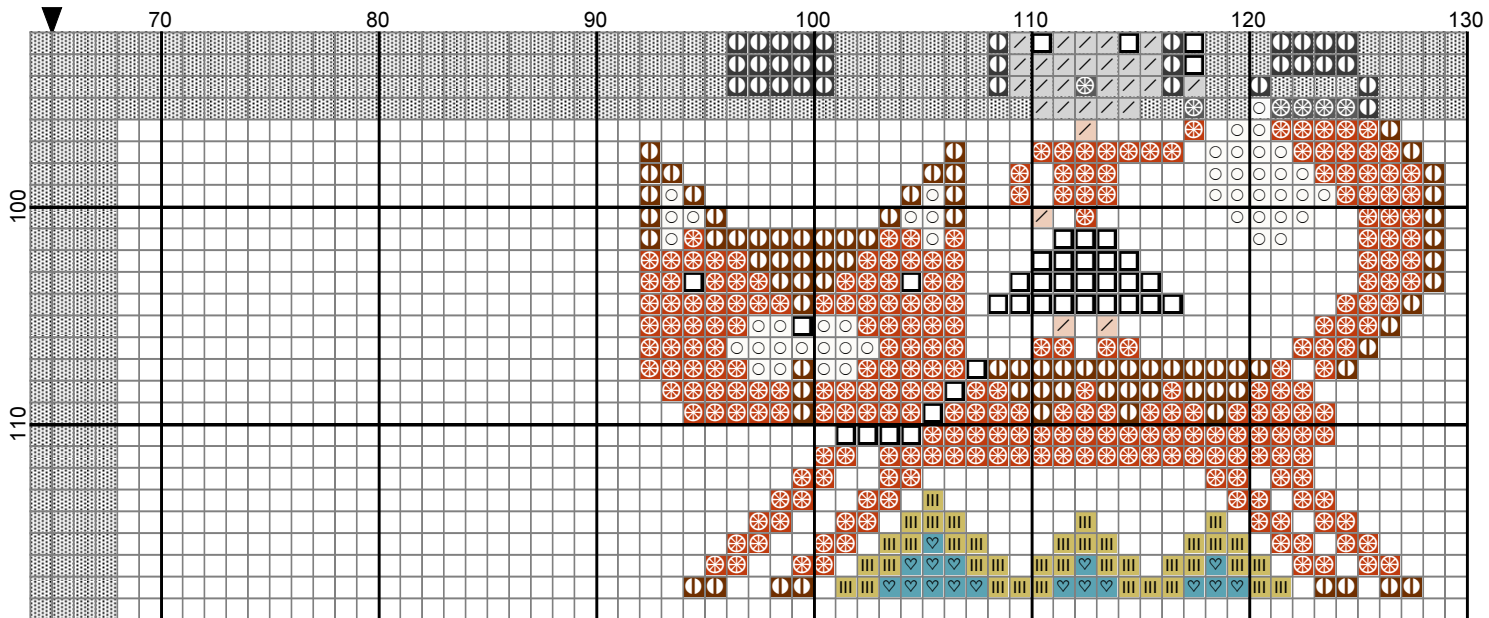
90





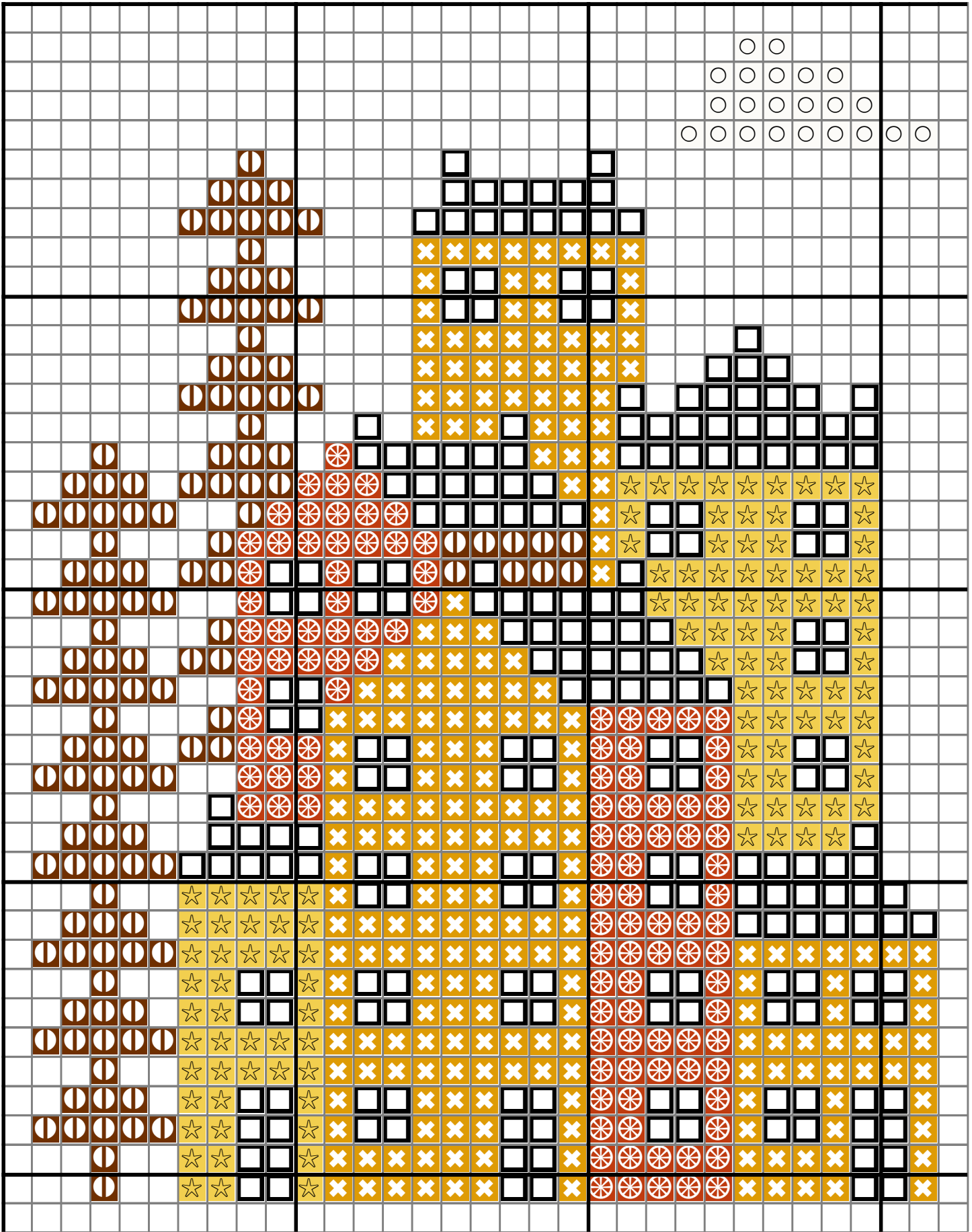


2021 Barbara Ana designs



2021 Barbara Ana designs





10

20

30

40

50

60



10

20

30

40

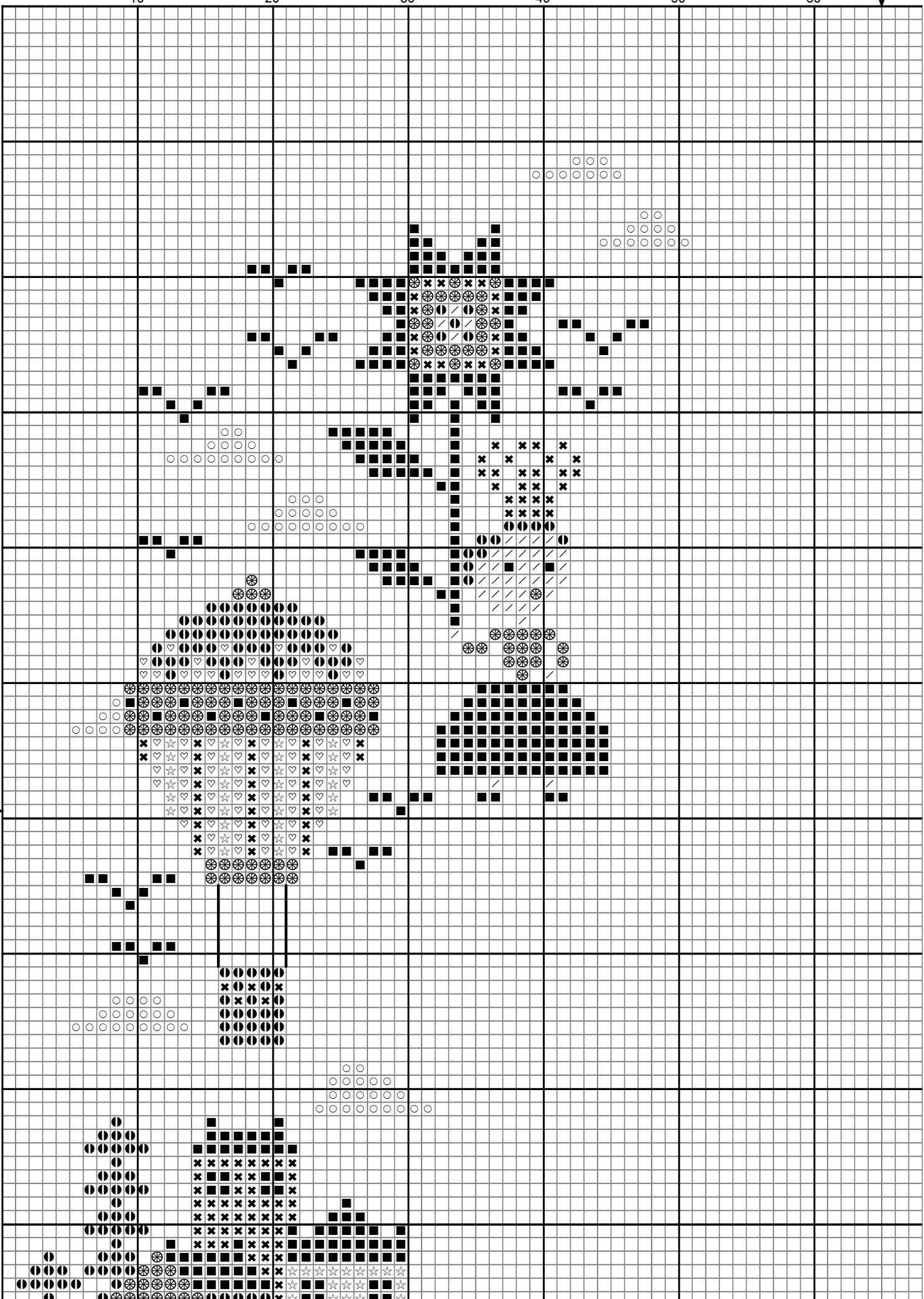
50

60

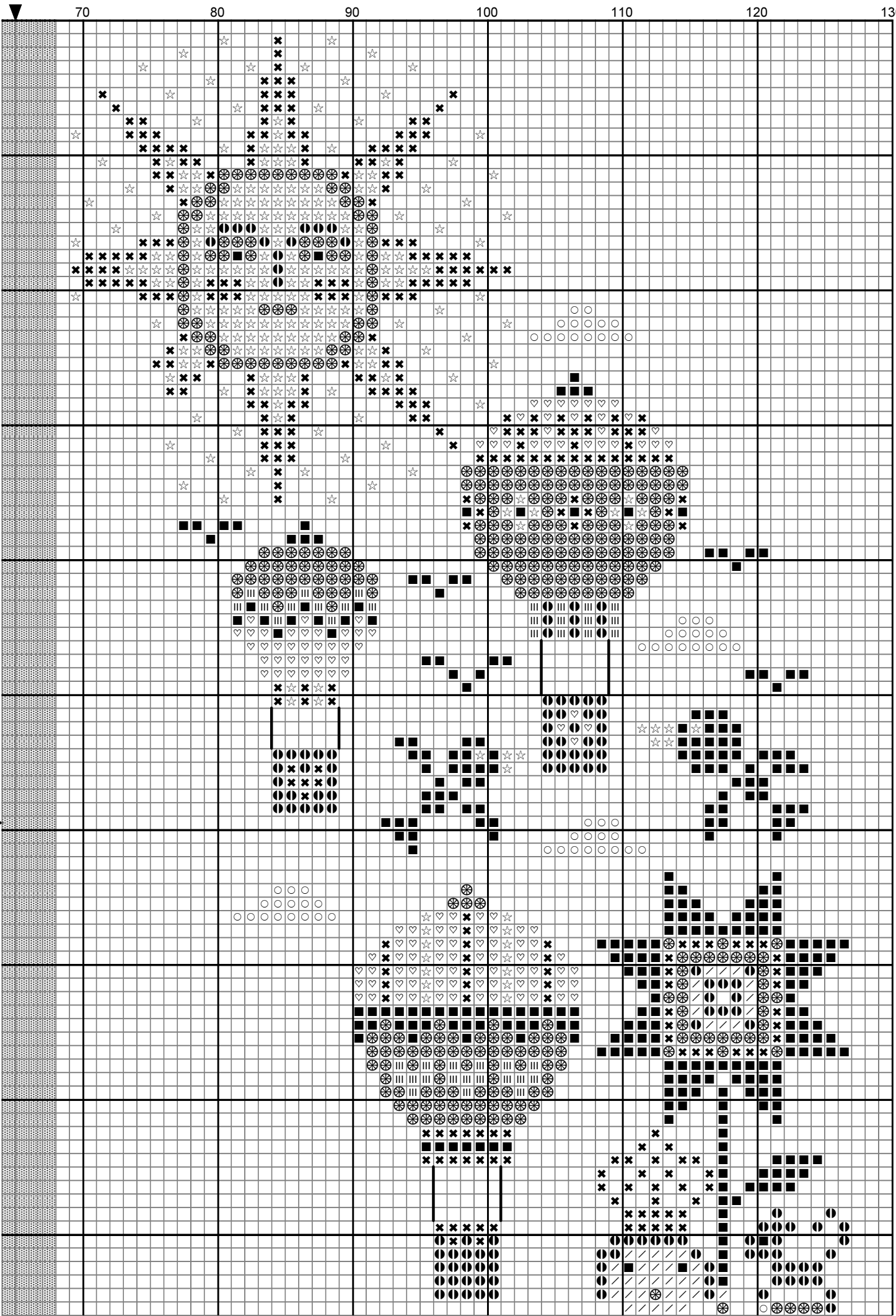
70

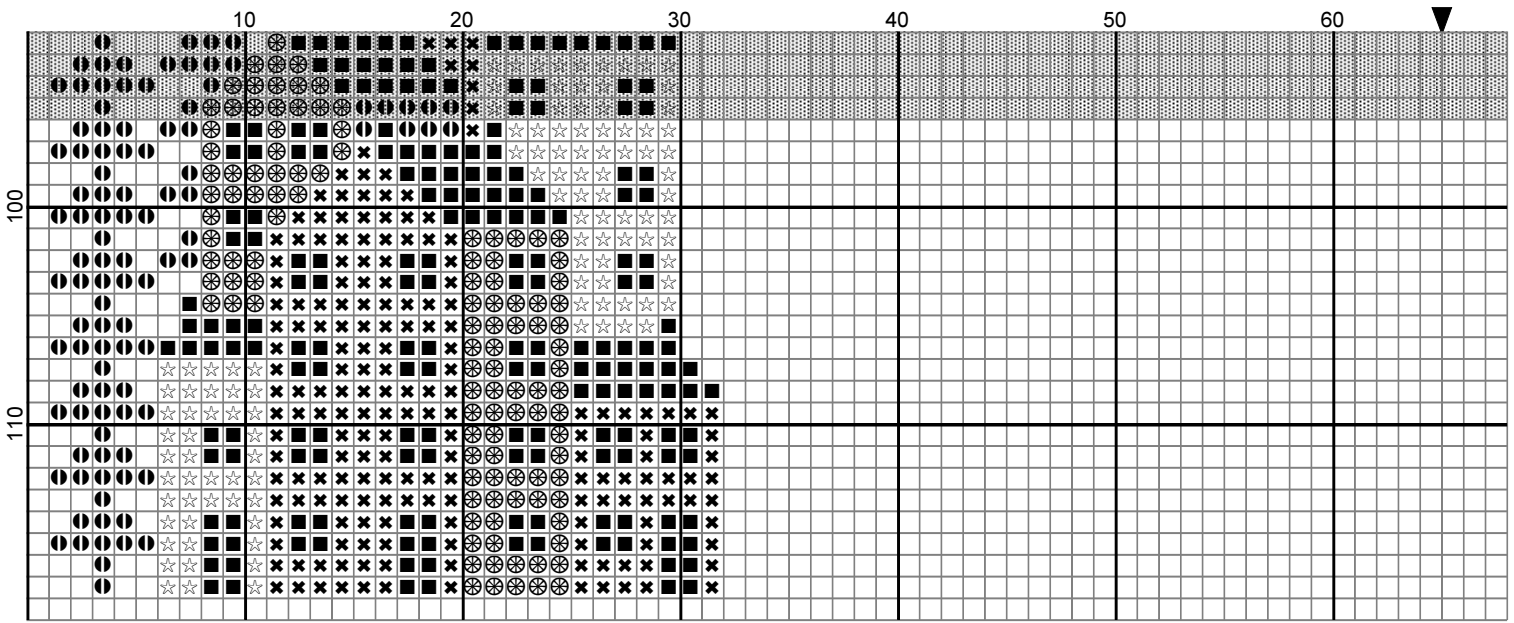
80

90

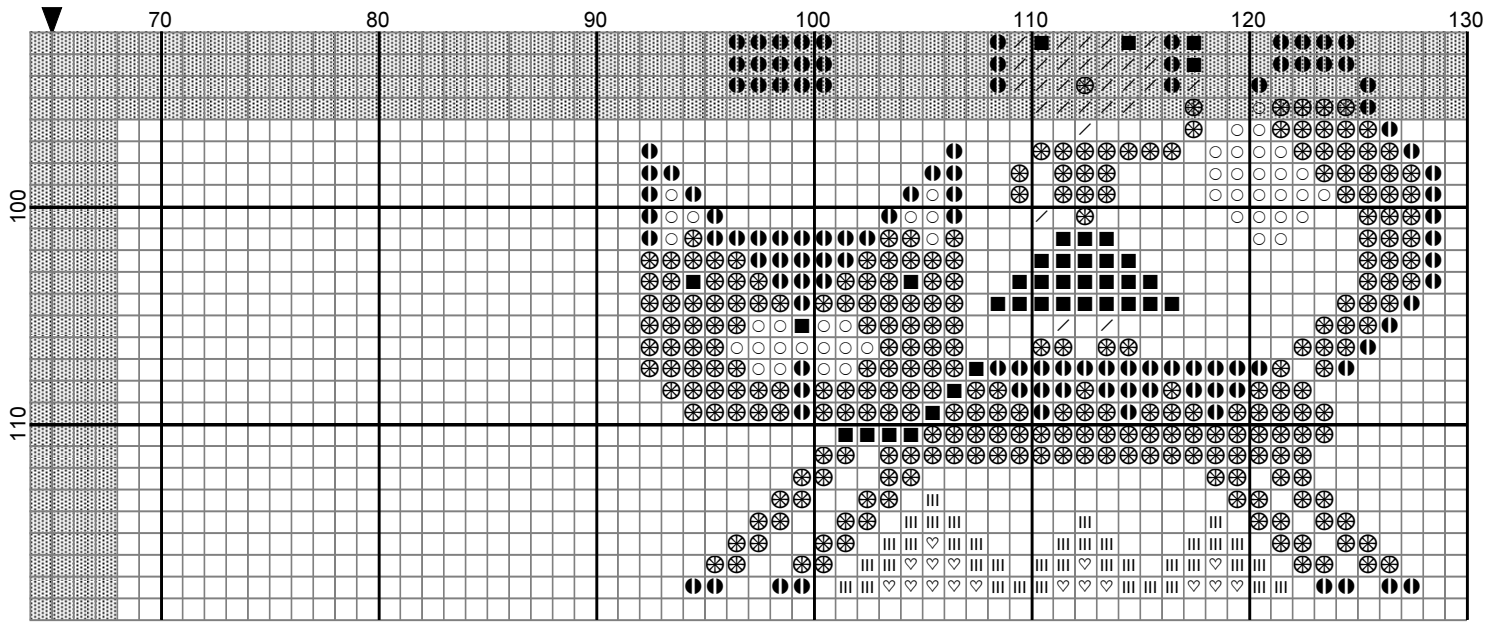




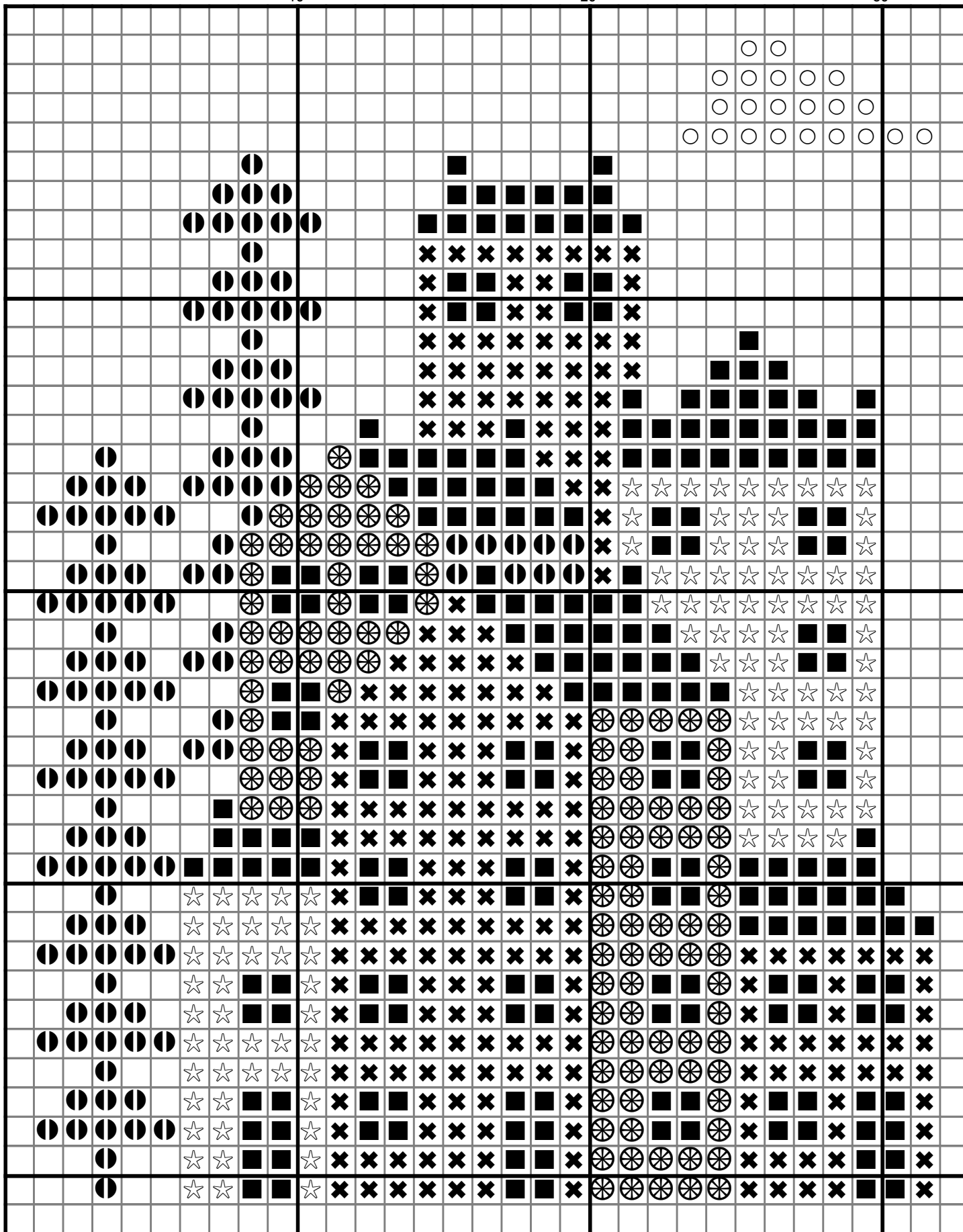




2021 Barbara Ana designs



2021 Barbara Ana designs





# Barbara Ana Designs

More patterns by Barbara Ana



All Creatures Great and Small



Love Never Fails



Let it Snow



Portuguese Bird sampler



A New World (5 parts)



Snooty Parrots Sampler



Stitchingly Ever After



My favorite Apron



Viva la Vida



Funky Bird



Midnight (Tis now the very witching...)



Something Wicked

All these patterns and many more are available on Creative Poppy's website

[www.creativepoppy.com](http://www.creativepoppy.com)





## Copyright and Terms of use:

Thank you for purchasing this design from [www.creativepoppy.com](http://www.creativepoppy.com). We hope that you will have a lot of fun stitching this pattern.

By purchasing this chart, you have agreed to use this design for your **personal use only**. Any unauthorized copying, use or transfer of this design, **even without monetary gain**, is strictly prohibited under copyright law. This includes copying, scanning, reproducing, posting on a website, or sending by email any pattern for which one does not have the designer's specific authorization.

### What you **cannot** do:

- make copies of this pattern to give or to sell
- send copies of this pattern by email
- upload or post this pattern onto a website
- make kits from this pattern

### What you **are very welcome** to do:

- print out several copies for your PERSONAL use.
  - This can be helpful if you like to highlight stitched areas as you go along or if you want to highlight the occurrence of a specific color.
  - It can be useful too to print several copies of your charts to cut out elements and rearrange motifs, create words with alphabets, extend border motifs etc.
- save an extra copy of this file as a backup onto a USB key or external hard drive. In this case, make a note of you file-open password which will be needed next time you open your file.
- personally stitch several projects using this design.

Happy stitching!  
**Creative Poppy**

Please support your designers and help respect their work. If you are aware of any copyright infringement, you can contact us at [contact@creativepoppy.com](mailto:contact@creativepoppy.com)

Creative Poppy is a Trademark of Creative Co. a company registered in France RCS 494 994 106  
1 rue de Stockholm, 75008 Paris, France

[www.creativepoppy.com](http://www.creativepoppy.com)