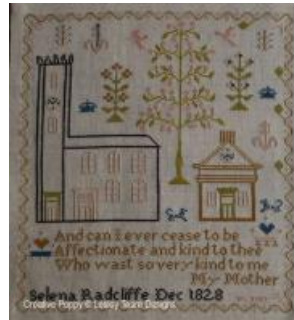


**Selena Radcliffe 1828 Reproduction Sampler  
cross stitch pattern  
by Couleur Tourterelle**



**Manufacturer: Couleur Tourterelle  
Reference: CLT176**

**Price: \$8.99**

**Options:**

**download pdf file : English**

**Description:**

**Selena Radcliffe 1828 Reproduction Sampler**

CROSS STITCH REPRODUCTION SAMPLER PATTERN, READY TO DOWNLOAD, BY Couleur Tourterelle

A heavily faded sampler comes to life and can be recreated in all its former beauty thanks to Meriem Chauvet's painstaking research and observation (Meriem is the collector and designer behind Couleur Tourterelle). We love the beautiful trees that surround the church - or is it two churches? - with the larger tree so tall it is higher than the bell tower. The church's typical architectural features a crenelated tower emphasising the sampler English origin.

Interestingly, the sampler does not include a Biblical verse or religious quote, as would have been typical of the times, but a poem dedicated to the stitcher's mother. The stanza picked by Selena is from a poem by Ann Taylor (1782-1866) in a work entitled «My Mother».

And can I ever cease to be  
Affectionate and kind to thee  
Who wast so very kind to me  
My mother

Each stanza of this poem features a question in the first three verses and ends with the same answer : My mother.

Regarding stitching, there are a couple of shifted cross stitches, cross stitches shifted laterally by one fabric thread, and used to ensure the perfect symmetry of doors and windows, as well as a few stitches over a single thread.

The original sampler (last photo) is part of the personal collection of Meriem Chauvet of Couleur Tourterelle . The reproduction cross stitch chart strictly reproduces every stitch and matches all colors of the original sampler.

Reproduction Sampler stitched using Soie d'Alger silk from Au Ver à soie (AVAS) or DMC, worked on 40ct linen.

**Size 8 ¼ x 9 ½ inch (21 x 24 cm).**

**A cross stitch pattern by Couleur Tourterelle.**

**>> see more [Reproduction Sampler patterns by Couleur Tourterelle](#)**

**Chart info & Needlework supplies for the pattern:  
Selena Radcliffe 1828 Reproduction Sampler**

Chart size in stitches: 170 x 190 (wide x high)

Needlework fabric: 40ct Permin linen, color Lambswool

Stitched size: 8 ¼ x 9 ½ inch (21 x 24 cm)

Stitches: cross stitch over 2 threads, a couple of cross stitches shifted by 1 fabric thread, Double Running stitch

Chart: Color and B&W, includes one-page chart for Digital stitching

Threads: Soie d'Alger silk from Au Ver à soie (AVAS) or DMC

Number of colors: 7

Themes: England, early 19th century, church buildings surrounded by large tree.

**>> see all [Early 19th century Reproduction samplers](#) (all designers)**

**>> see all [patterns related to England](#) (all designers)**

**>> see all [patterns related to Mother and Mother's Day](#)(all designers)**

All patterns on Creative Poppy's website are printable and available for instant download.

**[Link to the product](#)**